

ADVENT : SUNDAY I

'Proper' of the Mass

**Set to Gregorian Tones
With Organ Accompaniment**

by

Samuel F. Weber, O.S.B.



2005

The 'Proper' of the Mass
for Sundays and Solemnities of the Liturgical Year
commissioned by
Prince of Peace Catholic Church,
Taylors, SC.

2005

Acknowledgements

The English translation of the Psalm responses, the Gospel Acclamation verses, from *The Lectionary for Mass* © 1968, 1981, 1997, ICEL ; the English translation of the Entrance and Communion Antiphons from *The Roman Missal* © 1973 ICEL, Washington, D.C. All rights reserved.

Translations of the Offertory Verse and Psalms for the Introit and Communion prepared by the editor to accord with the requirements of *Liturgiam Authenticam*. These translations are based on the *Douai-Reims version*, as well as *The Book of Psalms* © 1950 and 1995 by the Confraternity of Christian Doctrine, Washington, D.C., and *The Revised Standard Version, An Ecumenical Edition* © 1973 by Division of Christian Education of the National Council of Churches of Christ in the United States of America.

Harmonizations of Latin Psalm tones adapted by the editor from the settings of Carlo Rossini in his classic work '*Proper*' of the Mass for the Entire Liturgical Year, 1933 ff., and from the various harmonizations of Achille Bragers.

English tones and harmonizations by Samuel F. Weber, O.S.B.

Musical settings and compilation © 2005 Saint Meinrad Archabbey, St. Meinrad, IN 47577 U.S.A. All rights reserved.

On the cover : MEDIEVAL CHOIR, Anonymous woodcut from *Der Spiegel des Menschlichen lebens*. Augsburg, 1479.

Contact the editor :

Rev. Samuel F. Weber, O.S.B.
Wake Forest University
The Divinity School
Box 7719
Winston-Salem, NC 27109-7719 U.S.A.
TEL 336.758.4289
EMAIL webersf@wfu.edu

One copy of this project is made available to interested parties for educational purposes only, on a not-for-profit, not for publication basis, for private distribution only. It is hoped that this project will result in a permanent resource once the expected English translation of the *Missale Romanum* (2003) is promulgated.

ADVENT : SUNDAY I

Gregorian Psalm Tone. Mode 5

For the Introit, the intonation notes are used with each verse.
Exception : verse 2 begins on the reciting tone.

INTROIT

1. *To you*, my God, I lift up my soul, / I **trust** in you ; †
let me never **come** to shame. *
Do not let my **enemies laugh** at me.
- 2. No one who **waits** for you *
is **ever put** to shame.
3. *Guide me* in your truth and **teach** me ; *
for you are **God** my **Savior**.
4. *Remember* not the sins of my youth,
or my **transgressions** ; *
according to your steadfast **love** **remember** me.
5. *Glory be* to the Father, and **to** the Son, *
and to the **Holy Spirit**.
6. *As it was* in the **beginning**, †
is now and ever **shall** be, *
world **without** end. Amen.

OFFERTORY

1. *To you*, my God, I lift up my soul, / I **trust** in you ; †
let me never **come** to shame. *
Do not let my **enemies laugh** at me.
- 2. No one who **waits** for you *
is **ever put** to shame.

COMMUNION

The Lord will shower **his** gifts, *
and our **land** will **yield** its fruit.

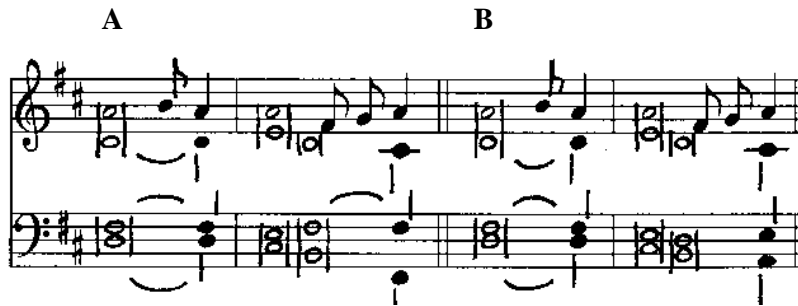
Repetition of the Introit Antiphon : *

To you, my God, I lift up my soul, I trust in you ; | let me never come to shame. |
Do not let my enemies laugh at me. | No one who waits for you is ever | **put to shame**.

(*)
Organ accomp.
for the repetition
of the Introit.

Advent : Sunday I

Modal Psalm Tone. Mode 5



INTROIT

1. To you, my God, I lift up my soul, / I trust in you ; †
let me never come *to shame*. *
Do not let my enemies *laugh at me*.
2. No one who waits *for you* *
is ever *put to shame*.
3. Guide me in your truth *and teach* me ; *
for you are *God my Savior*.
4. Remember not the sins of my youth,
or my *transgressions* ; *
according to your steadfast love *remember me*.
5. Glory be to the Father, and to *the Son*, *
and to the *Holy Spirit*.
6. As it was in the beginning, †
is now and *ever shall* be, *
world without *end*. *Amen*.
7. To you, my God, I lift up my soul, / I trust in you ; †
let me never come *to shame*. *
Do not let my enemies *laugh at me*.
8. No one who waits *for you* *
is ever *put to shame*.

OFFERTORY

1. To you, my God, I lift up my soul, / I trust in you ; †
let me never come *to shame*. *
Do not let my enemies *laugh at me*.
2. No one who waits *for you* *
is ever *put to shame*.

Harmonization B :

COMMUNION

The Lord will shower *his gifts*, *
and our land will *yield its fruit*.

NOTE

The modal psalm tone may be sung in unison with organ accompaniment, or SATB a cappella

POINTING :

1. One final accent : **bold type**
2. One or two preparatory syllables : *italic type*
3. Change of harmony in the middle of the recitation : underlined syllable
Change of harmony affects only the organ accompaniment or the ATB parts.
Change of harmony does not affect the melody line.

Advent : Sunday I

INTROIT

8. To you * I lift up my soul ; in you, O my God, I trust ; let me not be put to shame ;

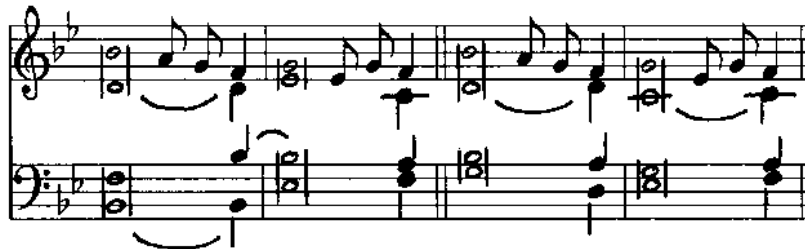


let not my en- e-mies ex- ult o- ver me. No one who waits for you shall be put to shame.



Melody by Columba Kelly, O.S.B. Harmonization by Samuel F. Weber, O.S.B.
© 2005 Saint Meinrad Archabbey, St. Meinrad, IN 47577-1010 U.S.A. All rights reserved. EMAIL : webersf@wfu.edu

PSALM 24 SATB or unison with organ accompaniment



- | | |
|---|---|
| <p>1. Guide me in your <i>truth and teach</i> me ;
for you are <i>God my Savior</i>.
Remember not the sins <i>of my youth</i>,
according to your steadfast love <i>remember me</i>. (R)</p> <p>2. Good and upright <i>is the Lord</i> ;
thus he shows sinners <i>the way</i>.
He guides the <i>humble to justice</i>,
he teaches the <i>humble his way</i>. (R)</p> | <p>3. My eyes are ever <i>toward the Lord</i>,
for he will free my feet <i>from the snare</i>.
Look toward me, and have <i>pity on me</i>,
for I am alone <i>and afflicted</i>. (R)</p> <p>4. Glory be to the Father, and <i>to the Son</i>, *
and to the <i>Holy Spirit</i>.
As it was in the beginning, / is now, and <i>ever shall be</i>, *
world without <i>end. Amen</i>. (R)</p> |
|---|---|

Chant melodies and organ harmonies arranged after traditional sources by Samuel F. Weber, O.S.B.
© 2005 Saint Meinrad Archabbey, St. Meinrad, IN 47577-1010 U.S.A. All rights reserved. EMAIL : webersf@wfu.edu

Advent : Sunday I

INTROIT. Chant verses. Psalm 24

8. Your ways, O Lord make known to me ; Lord, teach me your paths, * guide me in your truth

Musical notation for the first part of the Introit, featuring a treble and bass staff. The treble staff begins with a 7-measure rest, followed by a melodic line. The bass staff provides a harmonic accompaniment with sustained notes and some movement.

and teach me, for you are God my Sa- vior.

Musical notation for the second part of the Introit, featuring a treble and bass staff. The treble staff continues the melodic line, and the bass staff provides a harmonic accompaniment.

Gloria Patri

8. Glo- ry be to the Fa-ther, and to the Son, and to the Ho- ly Spir- it. * As it was in the

Musical notation for the first part of the Gloria Patri, featuring a treble and bass staff. The treble staff begins with a 7-measure rest, followed by a melodic line. The bass staff provides a harmonic accompaniment with sustained notes and some movement.

be-gin-ning, is now, and ev- er shall be, world with- out end. A- men.

Musical notation for the second part of the Gloria Patri, featuring a treble and bass staff. The treble staff continues the melodic line, and the bass staff provides a harmonic accompaniment.

Chant melodies and organ harmonies arranged after traditional sources by Samuel F. Weber, O.S.B.

Chant melodies and organ harmonies arranged after traditional sources by Samuel F. Weber, O.S.B.
© 2005 Saint Meinrad Archabbey, St. Meinrad, IN 47577-1010 U.S.A. All rights reserved. EMAIL : webersf@wfu.edu

Advent : Sunday I

Metrical Psalm.

Cf. Tietze, Christoph. *Hymn Introits for the Liturgical Year: The Origin and Early Development of the Latin Texts.* Chicago: Hillenbrand Books, 2005. ISBN 1-59525-011-5.

Liturgical Training Publications
1800 North Hermitage Avenue
Chicago, IL 60622-1101

TEL 1-800-933-7094

FAX 1-800-933-7094

email orders and web site: www.ltp.org

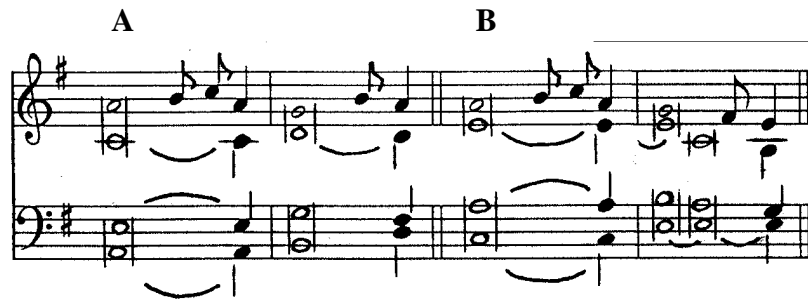
Advent : Sunday I

Responsorial Psalm (A)

In domo Domini.

Psalm 121 : 1

7. Let us go re-joic-ing to the house of the Lord.



Verses

Psalm 121

1. I rejoiced because they *said to me*,
“ We will go up to the house of *the Lord*. ”
And now we *have set foot*
within your gates, O *Jerusalem*. (Ṛ)
2. Jerusalem, built *as a city*
with *compact unity*.
To it the *tribes go up*,
the tribes of *the Lord*. (Ṛ)
3. According to the *decree for Israel*,
to give thanks to the name of *the Lord*.
In it are *set up judgment seats*,
seats for the house of *David*. (Ṛ)
4. Pray for the peace of *Jerusalem* !
May those who love *you prosper* !
May peace be *within your walls*,
prosperity in your buildings. (Ṛ)
5. Because of my *brothers and friends*
I will say, / “ Peace be *within you* ! ”
Because of the house of the *Lord, our God*,
I will pray for your good. (Ṛ)

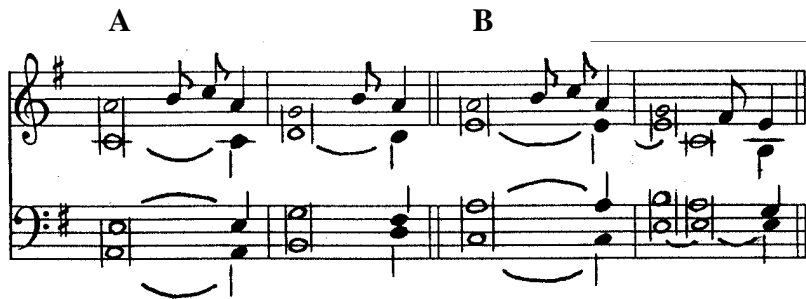
Advent : Sunday I

Responsorial Psalm (B)

Deus, converte nos.

Psalm 79

7. Lord, make us turn to you ; let us see your face and we shall be saved.



Verses

- B** 1. O shepherd of Israel, hearken, /
from your throne upon the cherubim *shine forth*. *
rouse your power and come to save us. (R.)
2. Once again, O *Lord of hosts*, *
look down from heaven, *and see* ;
take care of this vine, / and protect what your
right hand has planted, *
the son of man whom you yourself *made strong*. (R.)
3. May your help be with the man *of your right hand*,
with the son of man whom you yourself *made strong*.
Then we will no more *withdraw from you* ;
give us new life, / and we will call upon your name. (R.)

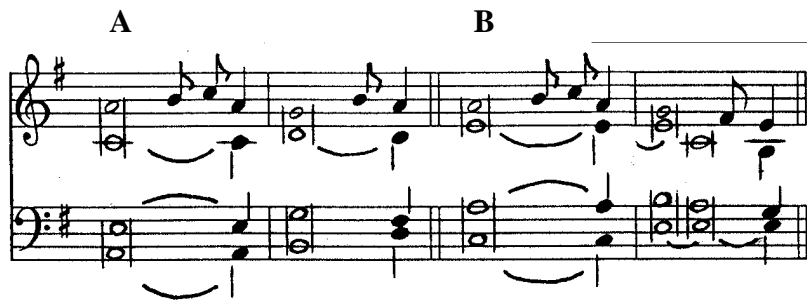
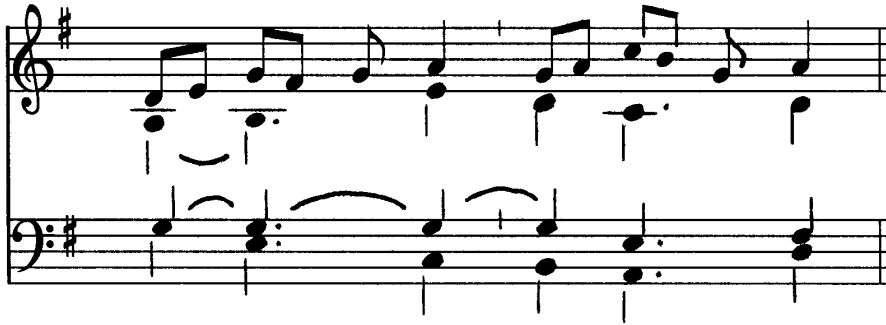
Advent : Sunday I

Responsorial Psalm (C)

Ad te, Domine.

Psalm 24

7. To you, O Lord, I lift my soul.



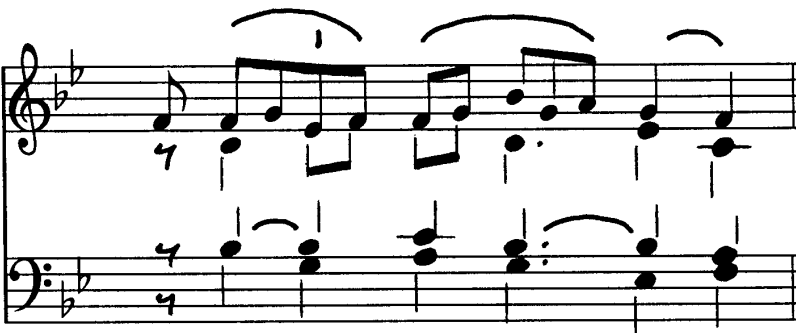
Verses

1. Your ways, O Lord, make *known to me* ; *
teach me *your paths*,
Guide me in your truth and teach me, /
for you are *God my Savior*, *
and for you I wait all the day. (R.)
2. Good and upright *is the Lord* ; *
thus he shows sinners *the way*.
He guides the *humble to justice*, *
and teaches the humble his way. (R.)
3. All the paths of the Lord are *kindness and constancy* *
toward those who keep his covenant and his *decrees*.
The friendship of the Lord is with *those who fear him*, *
and his covenant, for their instruction. (R.)

Advent : Sunday I

8. Al- le- lu- ia.

A




8. Al- le- lu- ia, al- le- lu- ia, al- le- lu- ia.

B

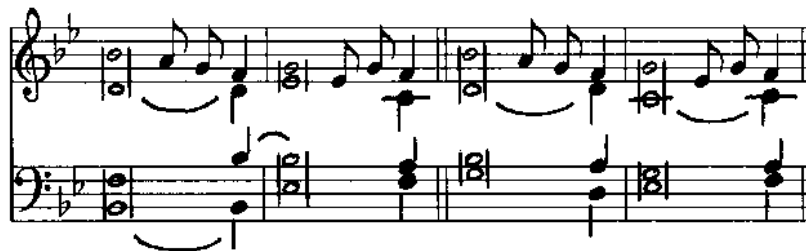


8. Al- le- lu- ia, al- le- lu- ia, al- le- lu- ia.

C



VERSE



Years ABC : Verse

Ostende nobis, Domine. Psalm 84 : 8

Show us, *Lord, your love* ; *
and grant us *your salvation*.

Advent : Sunday I

8. Al- le- lu- ia, al- le- lu- ia.

D

Organ accompaniment by Carlo Rossini

VIII.

E

VERSE

Years ABC : Verse

Ostende nobis, Domine. Psalm 84 : 8

Show us, Lord, your **love** ; *
and grant us your *salvation*.

8. Al- le- lu- ia.

F

Years ABC : Verse

Ostende nobis, Domine. Psalm 84 : 8

Show us, Lord, your **love** ; *
and grant us your *salvation*.

Advent : Sunday I

Offertory

Ad te levavi.

Psalm 24

4 A. To you * I lift up my soul ; in you, O my God, I trust ; let me not be put to shame.

1. Chant Verse : Psalm 24

4 A. Guide me in your truth and teach me ; * for you are God my Saviour.

2. Harmony Verse (SATB or unison with organ) : Psalm 24

The friendship of the Lord | is for those who fear him ; *

and his covenant, | is for their in-struction Ant. To you.

Advent : Sunday I

Communion

Dominus dabit benignitatem.

Psalm 84 : 13

1. The Lord will show-er his gifts, * and our land will yield its fruits.

Suggested performance practice : 1. Antiphon, 2. Chant verse, 3. Harmony verse, 4. Antiphon repeated.

PSALM VERSES. Psalm 84 (unison, with organ)

(unison, with organ or SATB *a cappella*)

1. You have favored, O Lord, *your land* ;
you have restored the well-being of Jacob.
You have forgiven the sins of *your people* ;
you have covered all their sins. (R)
2. Restore us, O God our Savior,
and abandon your displeasure against us.
Will you not instead give us life ;
and shall not your people rejoice in you ? (R)
3. I will hear what God proclaims ;
the Lord—for he proclaims peace
To his people, and to *his faithful* ones,
and to those who put in him their hope. (R)
4. Kindness and *truth shall meet* ;
justice and peace shall kiss.
Truth shall spring out of *the earth*,
and justice shall look down from heaven. (R)
5. The Lord himself will *give his* benefits ;
our land shall yield its increase.
Justice shall walk before him,
and salvation, along the way of *his steps*. (R)

A NOTE ON THE PERFORMANCE OF THE INTROIT

The settings given here are arranged for Prince of Peace Church, where they are performed thus :

ENTRANCE PROCESSION

1. The bell rings. All stand.
2. Celebrant and ministers begin the procession.
3. The choir sings the Introit Antiphon, Psalm Verse, *Gloria Patri*, and repeats the Introit Antiphon *recto tono*.

INCENSATION OF THE ALTAR AND CRUCIFIX

4. The choir is concluding the Introit as the celebrant and ministers reach the altar. They reverence. The celebrant begins to fill the thurible with incense.
5. The organ intones the chorale melody for the metrical hymn, playing the whole melody through once.
6. Choir and congregation sing the metrical Psalm as the celebrant is incensing the altar and crucifix.
 - a. The whole Psalm may be sung in unison by all.
 - b. The choir may alternate with the congregation, singing the even number verses in unison, or in four part harmony, *a capella*. This is indicated in the program.
 - c. The organist may provide organ interludes. Festive instruments may be used on greater feasts. Varied hymn accompaniments are encouraged from verse to verse.

AT THE CHAIR

7. The celebrant concludes the incensation, and takes his place at the chair. The metrical Psalm concludes.
 - a. The singing of the metrical Psalm is timed so as to conclude with the arrival of the celebrant at the chair.
 - b. Some verses of the metrical Psalm may be omitted if they are not needed. The final verse, the Doxology, is always included and never omitted.
 - c. The Introit covers the action of the entrance of celebrant and ministers and the incensation of the altar. The singing should not be unduly prolonged at this point, although it may continue a bit if necessary.

PSALM VERSES

8. Psalm verses are provided for other communities if they choose not to use the metrical Psalm version. As indicated, the Introit Antiphon is repeated after the verses.

ADAPTATION

9. Prince of Peace is a large church in the romanesque style that allows for an extended entrance rite. Smaller churches and communities will adapt this plan to suit their particular needs.