

ADVENT : SUNDAY IV

'Proper' of the Mass

**Set to Gregorian Tones
With Organ Accompaniment**

by

Samuel F. Weber, O.S.B.



2005

The 'Proper' of the Mass
for Sundays and Solemnities of the Liturgical Year
commissioned by
Prince of Peace Catholic Church,
Taylors, SC.

2005

Acknowledgements

The English translation of the Psalm responses, the Gospel Acclamation verses, from *The Lectionary for Mass* © 1968, 1981, 1997, ICEL ; the English translation of the Entrance and Communion Antiphons from *The Roman Missal* © 1973 ICEL, Washington, D.C. All rights reserved.

Translations of the Offertory Verse and Psalms for the Introit and Communion prepared by the editor to accord with the requirements of *Liturgiam Authenticam*. These translations are based on the *Douai-Reims version*, as well as *The Book of Psalms* © 1950 and 1995 by the Confraternity of Christian Doctrine, Washington, D.C., and *The Revised Standard Version, An Ecumenical Edition* © 1973 by Division of Christian Education of the National Council of Churches of Christ in the United States of America.

Harmonizations of Latin Psalm tones adapted by the editor from the settings of Carlo Rossini in his classic work '*Proper*' of the Mass for the Entire Liturgical Year, 1933 ff., and from the various harmonizations of Achille Bragers.

English tones and harmonizations by Samuel F. Weber, O.S.B.

Musical settings and compilation © 2005 Saint Meinrad Archabbey, St. Meinrad, IN 47577 U.S.A. All rights reserved.

On the cover : MEDIEVAL CHOIR, Anonymous woodcut from *Der Spiegel des Menschlichen lebens*. Augsburg, 1479.

Contact the editor :

Rev. Samuel F. Weber, O.S.B.
Wake Forest University
The Divinity School
Box 7719
Winston-Salem, NC 27109-7719 U.S.A.
TEL 336.758.4289
EMAIL webersf@wfu.edu

One copy of this project is made available to interested parties for educational purposes only, on a not-for-profit, not for publication basis, for private distribution only. It is hoped that this project will result in a permanent resource once the expected English translation of the *Missale Romanum* (2003) is promulgated.

ADVENT : SUNDAY IV

Tone 6



INTROIT

1. Let the clouds rain down the **Just One**, *
and the earth bring forth a **Savior**.
2. The heavens declare the glory of **God**, *
and the firmament proclaims *his handiwork*.
3. Glory be to the Father, and to the **Son**, *
and to the Holy **Spirit**.
4. As it was in the beginning, †
is now and *ever shall be*, *
world without end. **Amen**.

OFFERTORY

1. Hail Mary, *full of grace*, *
the Lord *is with* you ;
2. blessed are you *among women*, *
and blessed is the fruit of *your womb*.

Harmonization B :

COMMUNION

The Virgin is with child and shall *bear a son*, *
and she will call him *Emmanuel*.

*Repetition of the Introit Antiphon : **

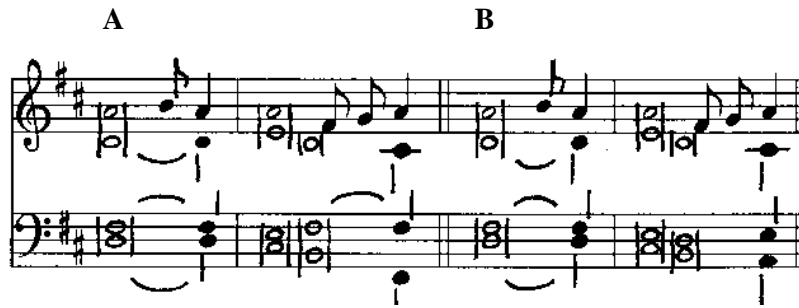
Let the clouds rain down the Just One, | and the earth bring forth a | **Savior**.

(*)
*Organ accomp.
for the repetition
of the Introit.*



Advent : Sunday IV

Modal Psalm Tone. Mode 5



INTROIT

1. Let the clouds rain down *the Just One*, *
and the earth bring *forth a Savior*.
2. The heavens declare the glory *of God*, *
and the firmament proclaims his **handiwork**.
3. Glory be to the Father, and to *the Son*, *
and to the *Holy Spirit*.
4. As it was in the beginning, †
is now and *ever shall be*, *
world without *end. Amen*.

- B** 5. Let the clouds rain down *the Just One*, *
and the earth bring *forth a Savior*.

OFFERTORY

1. Hail Mary, full *of grace*, *
the *Lord is with* you ;
2. blessed are you *among women*, *
and blessed is the fruit *of your womb*.

Harmonization B :

COMMUNION

The Virgin is with child and shall bear *a son*, *
and she will call *him Emmanuel*.

NOTE

The modal psalm tone may be sung in unison with organ accompaniment, or SATB a cappella

POINTING :

1. One final accent : **bold type**
2. One or two preparatory syllables : *italic type*
3. Change of harmony in the middle of the recitation : underlined syllable
Change of harmony affects only the organ accompaniment or the ATB parts.
Change of harmony does not affect the melody line.

Advent : Sunday IV

INTROIT

1. Drop down dew, * you heav- ens, from a- bove, and let the clouds rain the Just,

Musical notation for the first part of the Introit. It consists of a treble staff and a bass staff. The treble staff contains a melodic line with various note values and rests, including a fermata over the final note. The bass staff provides a harmonic accompaniment with chords and moving lines. The lyrics are written below the notes.

let the earth be o- pened and bud forth a sav- ior.

Musical notation for the second part of the Introit. It consists of a treble staff and a bass staff. The treble staff continues the melodic line from the first part. The bass staff provides a harmonic accompaniment. The lyrics are written below the notes.

Melody by Columba Kelly, O.S.B. Harmonization by Samuel F. Weber, O.S.B.
© 2005 Saint Meinrad Archabbey, St. Meinrad, IN 47577-1010 U.S.A. All rights reserved. EMAIL : webersf@wfu.edu

Or :

1. You heav- ens, o- pen from a- bove, that clouds may rain the Just One.

Musical notation for the 'Or' alternative of the Introit. It consists of a treble staff and a bass staff. The treble staff contains a melodic line with various note values and rests. The bass staff provides a harmonic accompaniment. The lyrics are written below the notes.

Chant melodies and organ harmonies arranged after traditional sources by Samuel F. Weber, O.S.B.
© 2005 Saint Meinrad Archabbey, St. Meinrad, IN 47577-1010 U.S.A. All rights reserved. EMAIL : webersf@wfu.edu

Advent : Sunday IV

PSALM 84



- | | |
|---|--|
| <p>1. You have favored, O <i>Lord</i>, your land ; *
you have restored the well-being of <i>Jacob</i>.
You have forgiven the guilt of <i>your people</i> ; *
you have covered all <i>their sins</i>. (R.)</p> <p>2. Restore us, O <i>God</i>, our Savior, *
and abandon your displeasure <i>against</i> us.
Show us, O <i>Lord</i>, your kindness, *.
and grant us your <i>salvation</i>. (R.)</p> | <p>3. I will hear what <i>God proclaims</i> ; *
the Lord--for he <i>proclaims peace</i>
to his people, and to <i>his faithful</i> ones ;
and to those who put in him <i>their hope</i>. (R.)</p> <p>4. Near indeed is his salvation to <i>those who fear</i> him, *
glory dwelling in <i>our land</i>.
The Lord himself will <i>give his benefits</i> ; *
our land shall yield <i>its increase</i>. (R.)</p> |
|---|--|

— OR —

PSALM 18



(unison, with organ or SATB *a cappella*)

- | | |
|--|---|
| <p>1. The heavens declare the glory of God,
and the firmament <i>proclaims his handiwork</i>.
Day pours out the word to day,
and night to <u>night</u> <i>imparts knowledge</i>. (R.)</p> <p>2. Not a word <i>nor a discourse</i>
whose voice <i>is not heard</i> ;
Through all the earth their voice <i>resounds</i>, *
and to the ends of the <u>world</u>, <i>their message</i>. (R.)</p> | <p>3. He has pitched a tent there <i>for the sun</i>,
which comes forth like the groom from his <i>bridal chamber</i> *
and, like a giant,
joyfully <u>runs its course</u>. (R.)</p> |
|--|---|

Advent : Sunday IV

CHANT VERSES

Psalm 84

1. You have fa-vored, O Lord, your land ; * you have restored the well- ing of Ja- cob.

Musical notation for the first verse of Psalm 84. It consists of a vocal line on a treble clef staff and an organ accompaniment on a bass clef staff. The key signature has one flat (B-flat), and the time signature is 7/4. The vocal line begins with a series of eighth notes, followed by a half note and a quarter note. The organ accompaniment provides a steady harmonic support with chords and moving lines.

Gloria Patri :

1. Glo- ry be to the Fa-ther, and to the Son, and to the

Musical notation for the beginning of the Gloria Patri. It features a vocal line on a treble clef staff and organ accompaniment on a bass clef staff. The key signature has one flat (B-flat), and the time signature is 4/4. The vocal line starts with a series of eighth notes, followed by a long, sustained note. The organ accompaniment consists of a few chords and a long, sustained note.

Ho- ly Spir- it. * As it was in the be-gin-ning,

Musical notation for the middle of the Gloria Patri. It features a vocal line on a treble clef staff and organ accompaniment on a bass clef staff. The key signature has one flat (B-flat), and the time signature is 4/4. The vocal line continues with eighth notes and a long, sustained note. The organ accompaniment provides harmonic support with chords and moving lines.

is now and ev- er shall be, world with-out end.

Musical notation for the end of the Gloria Patri. It features a vocal line on a treble clef staff and organ accompaniment on a bass clef staff. The key signature has one flat (B-flat), and the time signature is 4/4. The vocal line concludes with a series of eighth notes and a long, sustained note. The organ accompaniment provides harmonic support with chords and moving lines.

A- men.

Musical notation for the final 'Amen' of the Gloria Patri. It features a vocal line on a treble clef staff and organ accompaniment on a bass clef staff. The key signature has one flat (B-flat), and the time signature is 4/4. The vocal line concludes with a series of eighth notes and a long, sustained note. The organ accompaniment provides harmonic support with chords and moving lines.

Advent : Sunday IV

Responsorial Psalm (A)

Introibit Dominus.

Psalm 23 : 7c and 10b

5. Let the Lord en- ter ; he is king of glo- ry

The first musical system consists of two staves. The upper staff is a vocal line in G major (one sharp) and 4/4 time, with a treble clef. The lower staff is an organ accompaniment line in G major, with a bass clef. The music is written in a simple, homophonic style. The vocal line begins with a half note G4, followed by quarter notes A4, B4, and C5, then a half note B4, and finally a half note G4. The organ accompaniment provides a harmonic support with chords and moving lines.

A

B

The second musical system also consists of two staves in G major. The vocal line continues with a half note G4, followed by quarter notes A4, B4, and C5, then a half note B4, and finally a half note G4. The organ accompaniment continues with chords and moving lines, providing a harmonic support for the vocal line.

Verses

Psalm 23 : 1-2. 3-4. 5-6

1. The Lord's are the earth and *its fullness* ; *
the world and those who dwell *in it*.
For he founded it upon *the seas* *
and established it upon *the rivers*. (℟̣)
2. Who can ascend the mountain of *the Lord* ? *
or who may stand in his *holy place* ?
One whose hands are sinless, whose heart *is clean*, *
who desires not what *is vain*. (℟̣)
3. He shall receive a blessing from *the Lord*, *
a reward from God *his savior*.
Such is the race that seeks *for him*, *
that seeks the face of the God *of Jacob*. (℟̣)

Advent : Sunday IV

Responsorial Psalm (B)

Misericordias tuas.

Psalm 88 : 2a

7. For- ev- er I will sing the good-ness of the Lord.

The first musical system consists of two staves. The upper staff is in treble clef with a key signature of one sharp (F#), and the lower staff is in bass clef with the same key signature. The vocal line begins with a quarter rest, followed by a series of eighth and quarter notes. The organ accompaniment provides a harmonic foundation with chords and moving lines.

The second musical system is divided into two parts, A and B. Part A is marked with a '1' above the first measure. Part B is marked with a '2' above the first measure. Both parts feature a vocal line in treble clef and an organ accompaniment in bass clef, continuing the melody and harmony from the first system.

Verses

Psalm 88 : 2-3. 4-5. 27. 29

1. The promises of the Lord I will *sing forever* ; *
through all generations / my mouth shall proclaim *your faithfulness*.
For you have said, / “ My kindness is established *forever* ” ;
in heaven you have *confirmed your faithfulness*. (R.)
2. “ I have made a covenant *with my chosen one*, *
I have sworn to David *my servant* :
Forever will I confirm *your posterity* *
and establish your throne for *all generations*. ” (R.)
3. “ He shall say of me, / ‘ You *are my father*, *
my God, the Rock, *my savior*. ’
Forever I will maintain my kindness *toward him*, *
and my covenant with *him stands firm*. ” (R.)

Advent : Sunday IV

Responsorial Psalm (C)

Deus, converte nos.

Psalm 79 : 4

4. Lord, make us turn to you ; let us see your face and we shall be saved.

The image shows two systems of musical notation. The first system consists of a treble clef staff and a bass clef staff. The treble staff contains a melodic line with various note values and rests, including a long note with a fermata. The bass staff contains a harmonic accompaniment with chords and single notes. The second system is similar, continuing the melody and accompaniment. The notation is in a common time signature and uses a key signature with one flat.

Verses

Psalm 79 : 2-3. 15-16. 18-19

1. O shepherd of Israel, **hearken**, *
from your throne upon the cherubim, *shine forth*.
Rouse your **power**, *
and come to save us. (R̄)
2. Once again, O Lord of **hosts**,
look down from heaven, *and see* ;
Take care of this vine / and protect what your right hand has **planted**, *
the son of man whom you yourself **made strong**. (R̄)
3. May your help be with the man of your **right hand**, *
with the son of man whom you yourself **made strong**.
Then we will no more withdraw from **you** ; *
give us new life, / and we will call upon your **name**. (R̄)

Advent : Sunday IV

8. Al- le- lu- ia.

A



8. Al- le- lu- ia, al- le- lu- ia, al- le- lu- ia.

B

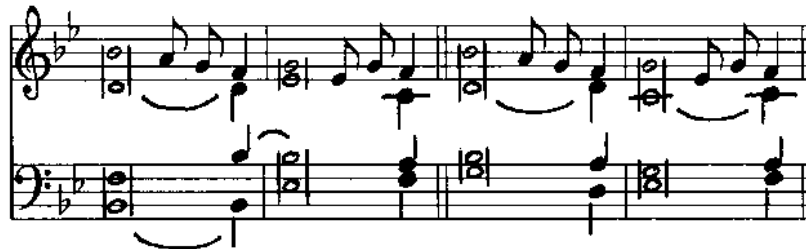


8. Al- le- lu- ia, al- le- lu- ia, al- le- lu- ia.

C



VERSE



Years ABC : Verse

Ecce, ancilla Domini. Luke 1 : 38

Behold, / I am the handmaid of the **Lord**. *

May it be done to me according to *your word*.

Advent : Sunday IV

8. Al- le- lu- ia, al- le- lu- ia.

D

Organ accompaniment by Carlo Rossini

E

VIII.

VERSE

Years ABC : Verse

Ecce, ancilla Domini.

Luke 1 : 38

Behold, / I am the handmaid of the **Lord**. *

May it be done to me according to *your word*.

8. Al- le- lu- ia.

F

Years ABC : Verse

Ecce, ancilla Domini.

Luke 1 : 38

Behold, / I am the handmaid of the **Lord**. *

May it be done to me according to *your word*.

Advent : Sunday IV

OFFERTORY

1. Hail Mar- y, * full of grace, the Lord is with you ; bless-ed are you a- mong wo- men, al- le- lu- ia.

Text from the *Roman Missal*, 1964. Melody by Columba Kelly, O.S.B. Harmonization by Samuel F. Weber, O.S.B.

Verse 1

1. How shall this be done since I know not man ? * The Holy Spirit will come upon you and the power of the Most

High will o- ver- shad- ow you. * Bless-ed.

Verse 2

There- fore, the child to be born of you will be called ho- ly * the Son of God. *Ant.* Hail Mar- y.

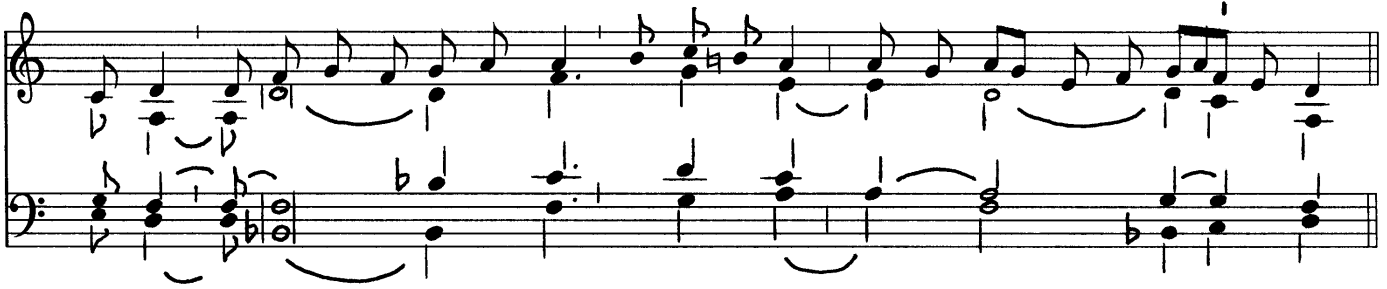
Advent : Sunday IV

Communion

Ecce Virgo concipiet.

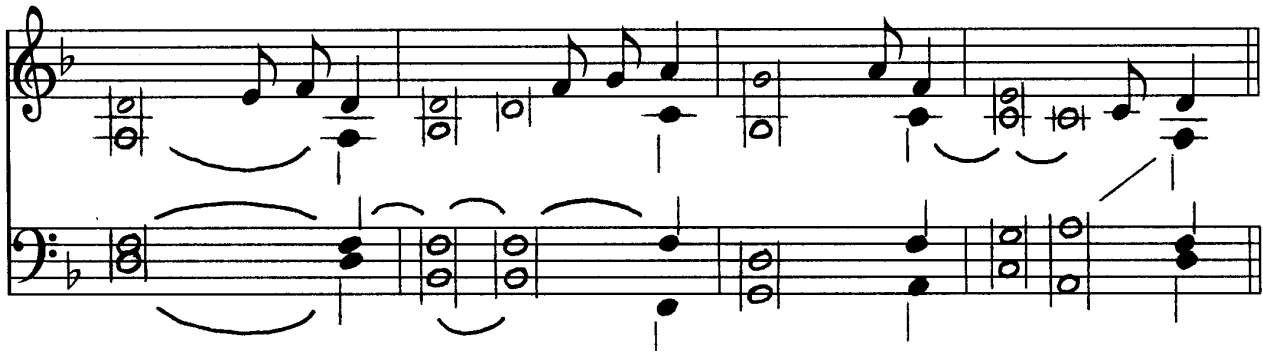
Isaiah 7 : 14

1. Be- hold, * a vir- gin shall be with child and bear a son, and shall name him Em- man- u- el.



Melody by Columba Kelly, O.S.B. Harmonization by Samuel F. Weber, O.S.B.

PSALM VERSES. Psalm 18 A (unison, with organ)



(unison, with organ or SATB *a cappella*)

1. The heavens declare the *glory of God*,
and the firmament *proclaims his handiwork*.
Day pours out the word *to day*,
and night to night *imparts knowledge*. (R)

2. Not a word *nor a discourse*
whose voice *is not heard* ;
Through all the earth their voice *resounds*, *
and to the ends of the world, *their message*. (R)

3. He has pitched a tent there *for the sun*,
which comes forth like the groom from his *bridal chamber* *
and, like a *giant*,
joyfully runs its course . (R)