

**SUNDAY XXXIV  
THROUGH THE YEAR  
SOLEMNITY OF CHRIST THE KING**

**'Proper' of the Mass**

**Set to Gregorian Tones  
With Organ Accompaniment**

by

**Samuel F. Weber. O.S.B.**



2006

---

## Acknowledgements

The English translation of the Psalm responses, the Gospel Acclamation verses, from *The Lectionary for Mass* © 1968, 1981, 1997, ICEL ; the English translation of the Entrance and Communion Antiphons from *The Roman Missal* © 1973 ICEL, Washington, D.C. All rights reserved.

Translations of the Offertory Verse and Psalms for the Introit and Communion prepared by the editor to accord with the requirements of *Liturgiam Authenticam*. These translations are based on the *Douai-Reims version*, as well as *The Book of Psalms* © 1950 and 1995 by the Confraternity of Christian Doctrine, Washington, D.C., and *The Revised Standard Version*, An Ecumenical Edition © 1973 by Division of Christian Education of the National Council of Churches of Christ in the United States of America.

Harmonizations of Latin Psalm tones adapted by the editor from the settings of Carlo Rossini in his classic work '*Proper*' of the Mass for the Entire Liturgical Year, 1933 ff., and from the various harmonizations of Achille Bragers.

English tones and harmonizations by Samuel F. Weber, O.S.B.

Musical settings and compilation © 2006 Saint Meinrad Archabbey, St. Meinrad, IN 47577 U.S.A. All rights reserved.

On the cover : MEDIEVAL CHOIR, Anonymous woodcut from *Der Spiegel des Menschlichen lebens*. Augsburg, 1479.

Contact the editor :

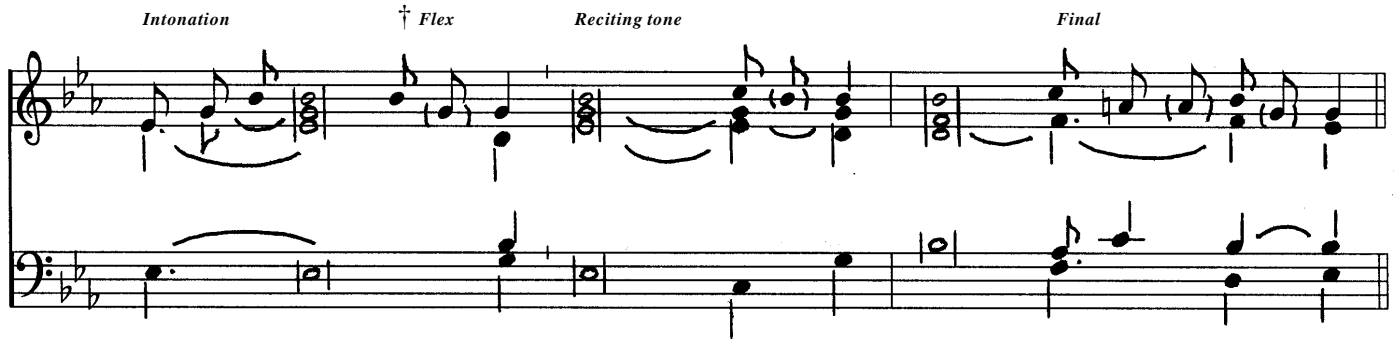
Rev. Samuel F. Weber, O.S.B.  
Wake Forest University  
The Divinity School  
Box 7719  
Winston-Salem, NC 27109-7719 U.S.A.  
TEL 336.758.4289  
EMAIL webersf@wfu.edu

---

One copy of this project is made available to interested parties for educational purposes only, on a not-for-profit, not for publication basis, for private distribution only. It is hoped that this project will result in a permanent resource once the expected English translation of the *Missale Romanum* (2003) is promulgated.

# SUNDAY XXXIV THROUGH THE YEAR SOLEMNITY OF CHRIST THE KING

## Gregorian Psalm Tone. Mode 5



For the Introit, the intonation notes are used with each verse.

### INTROIT

1. *The Lamb who* was slain is **worthy** to receive **strength** and **divinity**,
2. *wisdom and* power and **honor** : \* to him be glory and **power** for **ever**.
3. *O God, with* your judgment **endow** the King, \* and with your **justice** the **King's** son.
4. *He shall* govern your people with **justice** \* and your afflicted **ones** with **judgment**.
5. *Glory be* to the Father, and **to** the Son, \* and to the **Holy Spirit**.
6. *As it was* in the **beginning**, † is now and ever **shall** be, \* world **without** end. Amen.
7. *The Lamb who* was slain is **worthy** to receive **strength** and **divinity**,
8. *wisdom and* power and **honor** : \* to him be glory and **power** for **ever**.

### OFFERTORY

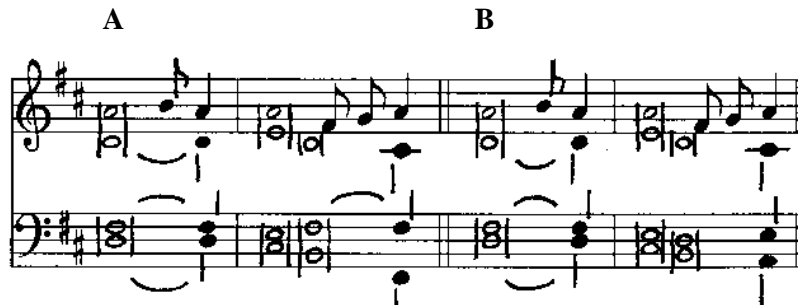
*Ask of me* / and I will give you the nations for an **inheritance**, \* and the ends of the earth for **your** possession.

### COMMUNION

*The Lord will* reign for **ever** ; \* and will give his **people** the **gift** of peace.

# Sunday XXXIV. Christ the King

## Modal Psalm Tone. Mode 5



*Alternate harmonizations A and B :*

### INTROIT

1. The Lamb who was slain *is worthy* \*  
to receive strength and divinity,
2. wisdom and power *and honor* : \*  
to him be glory and power for ever.
3. O God, with your judgment endow *the King*, \*  
and with your justice the King's son.
4. He shall govern your people *with justice* \*  
and your afflicted ones with judgment.
5. Glory be to the Father, and to *the Son*, \*  
and to the Holy Spirit.
6. As it was in the beginning, †  
is now and *ever shall* be, \*  
world without end. Amen.
7. The Lamb who was slain *is worthy*  
to receive strength and divinity,
8. wisdom and power *and honor* : \*  
to him be glory and power for ever.

*Harmonization B :*

### OFFERTORY

Ask of me / and I will give you the nations for an *inheritance*, \*  
and the ends of the earth for your possession.

### COMMUNION

The Lord will reign *for ever* ; \*  
and will give his people the gift of peace.

### NOTE

*The modal psalm tone may be sung in unison with organ accompaniment, or SATB a cappella*

### POINTING :

1. One final accent : **bold type**
2. One or two preparatory syllables : *italic type*
3. Change of harmony in the middle of the recitation : underlined syllable  
Change of harmony affects only the organ accompaniment or the ATB parts.  
Change of harmony does not affect the melody line.

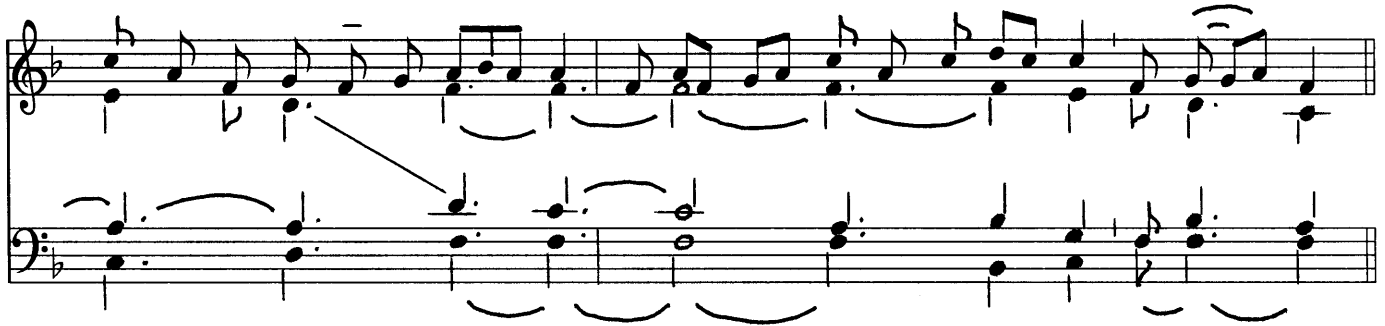
# Sunday XXXIV. Christ the King

## INTROIT

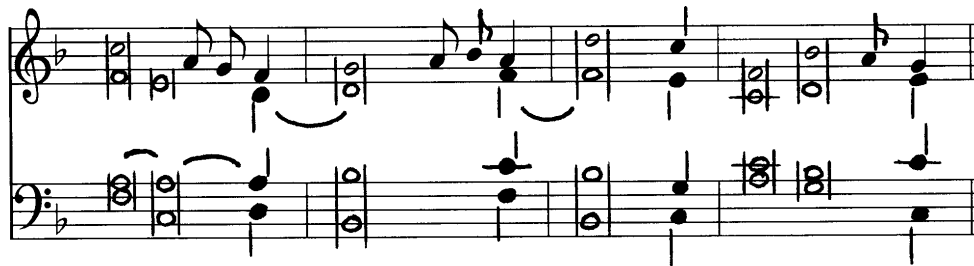
6. The Lamb who was slain \* is wor- thy to re- ceive strength and di- vin- i- ty,



wis- dom and pow- er and hon- or: to him be glo- ry and pow- er for ev- er.



## PSALM 71 SATB or unison with organ accompaniment



1. O Lord, with your judgment en- | *dow the King*,  
and with your *justice the King's* son.  
He shall govern your people with **justice**  
and your af- | **flicted** ones *with judgment*. (R̃.)
2. The mountains shall yield | *peace for the people*,  
and *the hills justice*.  
He shall defend the afflicted among the **people**,  
save the | **children of the poor**. (R̃.)

3. May he endure as | **long as the sun**, \*  
and like the moon through all *generations*.  
Justice shall flower in his **days**, \*  
and profound peace, / till the | **moon** be *no more*. (R̃.)
4. Glory be to the Father, and | *to the Son*, \*  
and to the *Holy Spirit*.  
As it was in the beginning, / is now, and ever **shall** be, \*  
| **world** without end. **Amen**. (R̃.)

# Sunday XXXIV. Christ the King

## INTROIT. Chant verses. Psalm 71

6. O God, with your judgment endow the King, and with your justice, the King's son ; \*

He shall govern your people with justice.

## Gloria Patri

6. Glory be to the Father, and to the Son, and to the Holy Spirit. \* As it was

in the beginning, is now and ever shall be, world without end. Amen.

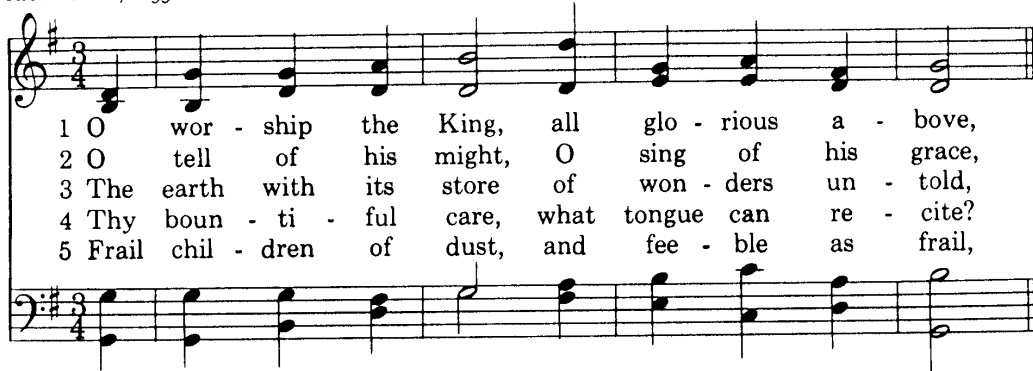
# Sunday XXXIV. Christ the King

## METRICAL PSALM

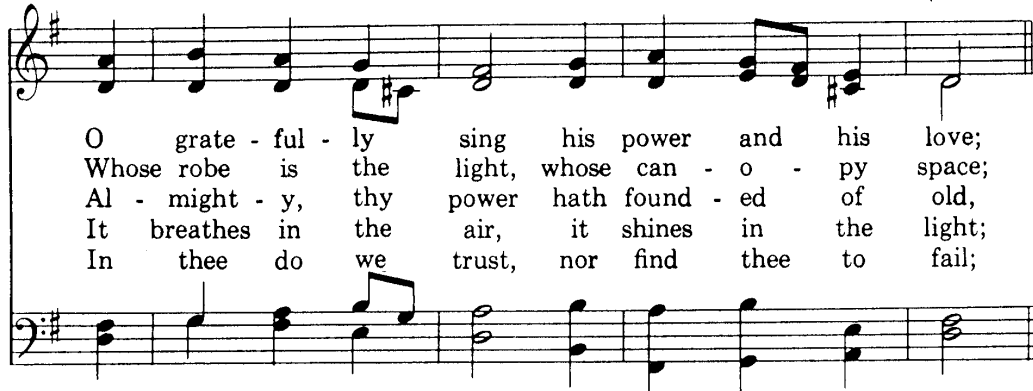
### O Worship the King, All Glorious Above

Based on Psalm 104  
Robert Grant, 1833

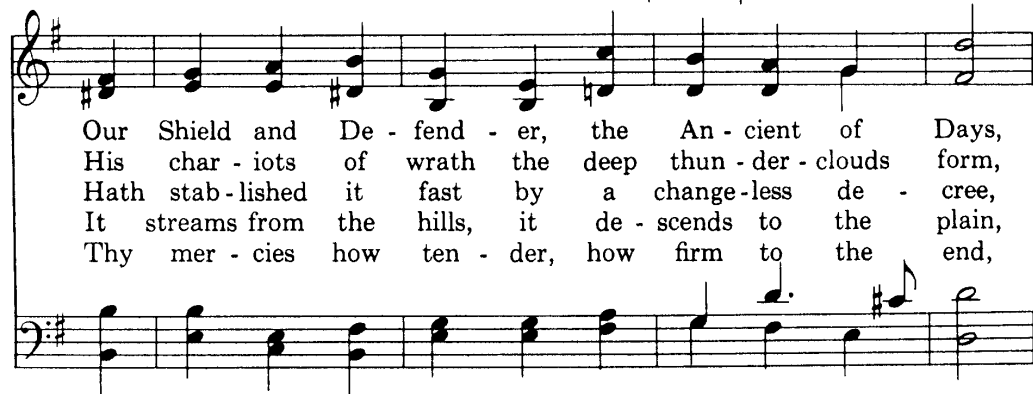
HANOVER 10.10.11.11.  
William Croft?, 1708



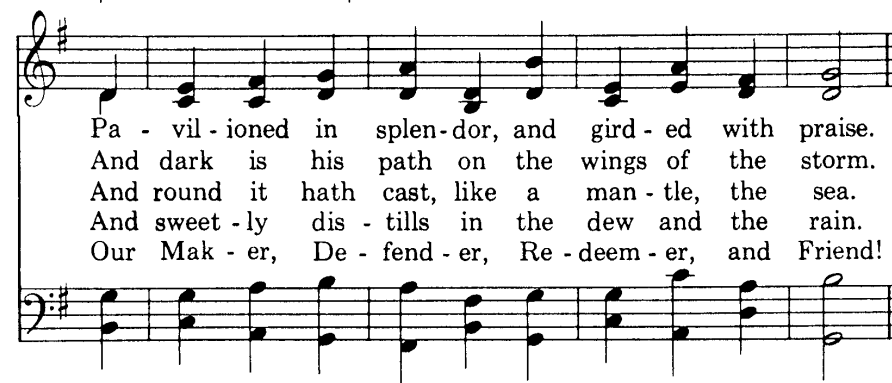
1 O wor - ship the King, all glo - rious a - bove,  
2 O tell of his might, O sing of his grace,  
3 The earth with its store of won - ders un - told,  
4 Thy boun - ti - ful care, what tongue can re - cite?  
5 Frail chil - dren of dust, and fee - ble as frail,



O grate - ful - ly sing his power and his love;  
Whose robe is the light, whose can - o - py space;  
Al - might - y, thy power hath found - ed of old,  
It breathes in the air, it shines in the light;  
In thee do we trust, nor find thee to fail;



Our Shield and De - fend - er, the An - cient of Days,  
His char - iots of wrath the deep thun - der - clouds form,  
Hath stab - lished it fast by a change - less de - cree,  
It streams from the hills, it de - scends to the plain,  
Thy mer - cies how ten - der, how firm to the end,



Pa - vil - ioned in splen - dor, and gird - ed with praise.  
And dark is his path on the wings of the storm.  
And round it hath cast, like a man - tle, the sea.  
And sweet - ly dis - tills in the dew and the rain.  
Our Mak - er, De - fend - er, Re - deem - er, and Friend!

# Sunday XXXIV. Christ the King

## Responsorial Psalm (A)

*Dominus pascuit me.*

*Psalm 22*

The Lord is my shepherd; there is nothing I shall want.



## Psalm Tone

### Psalm 22 (Lectionary Version)



## Verses

*Ps 22*

- A** 1. The Lord is my shepherd ; / I shall *not want*.  
**B** In verdant pastures he gives me repose. (R:)
2. You spread the table *before* me  
in the sight of my **foes** ;  
you anoint my head *with oil* ;  
my cup overflows. (R:)
4. Only goodness and kindness follow me  
all the days of my **life** ;  
and I shall dwell in the house of the **Lord**  
for years to **come**. (R:)



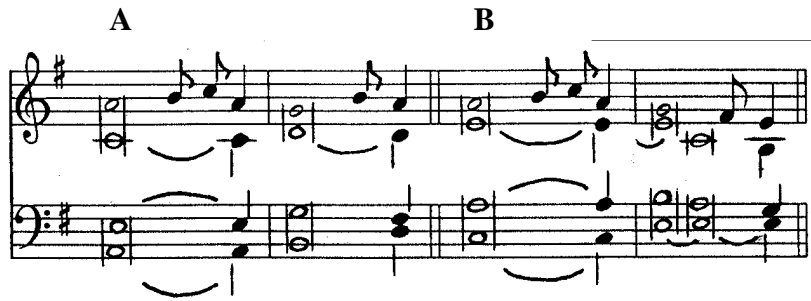
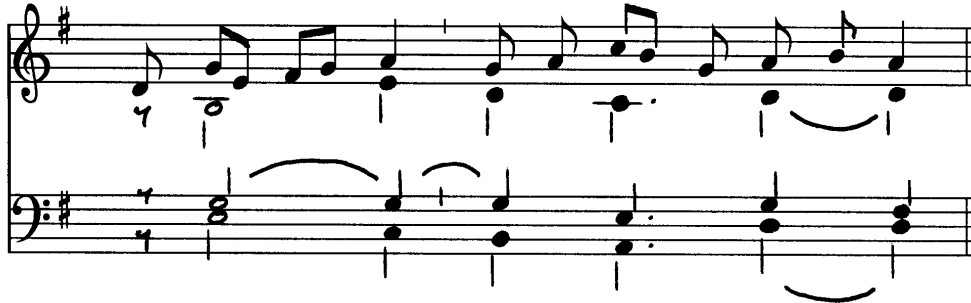
# Sunday XXXIV. Christ the King

## Responsorial Psalm (B)

*Dominus regnavit.*

*Psalm 92 : 1a*

7. The Lord is king ; he is robed in maj- es- ty.



Verses

*Psalm 92 : 1-2. 5*

- B** 1. The Lord is king, in *splendor robed* ;  
robed is the Lord and gird about *with strength*. (R.)
- A** 2. And he has made *the world firm*,  
not to *be moved*.
- B** Your throne stands firm *from of old* ;  
from everlasting you are, **O Lord**. (R.)
- B** 3. Your decrees are worthy of trust indeed ; /  
holiness *befits your house*,  
O Lord, for length of days. (R.)

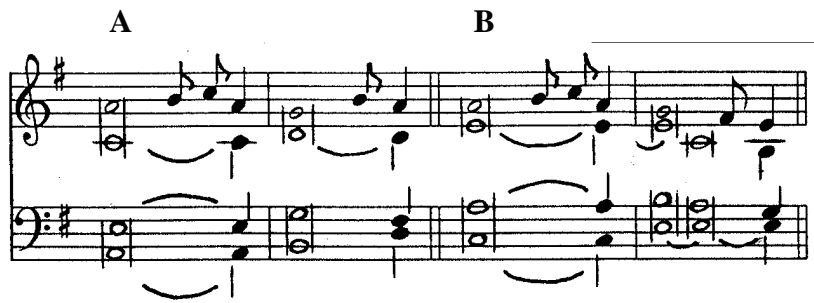
# Sunday XXXIV. Christ the King

## Responsorial Psalm (C)

*In domo Domini.*

*Psalm 121 : 1*

7. Let us go re-joic-ing to the house of the Lord.



### Verses

*Psalm 121 : 1-2. 3-4. 4-5*

1. I rejoiced because they *said to me*,  
“ We will go up to the house of *the Lord*. ”  
And now we *have set foot*  
within your gates, O *Jerusalem*. (R)
2. Jerusalem, built *as a city*  
with compact **unity**.  
To it the *tribes go up*,  
the tribes of *the Lord*. (R)
3. According to the *decree for Israel*,  
to give thanks to the name of *the Lord*.  
In it are *set up judgment* seats,  
seats for the house of *David*. (R)

# Sunday XXXIV. Christ the King

## Alleluia

8. Al- le- lu- ia, al- le- lu- ia, al- le- lu- ia.



*Or :*

8. Al- le- lu- ia, al- le- lu- ia, al- le- lu- ia.



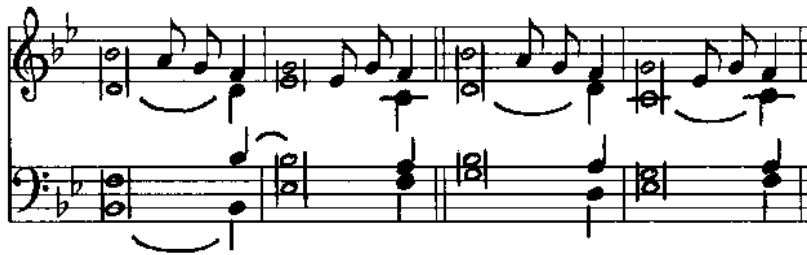
*Or :*

Organ accompaniment by Carlo Rossini

VIII.



Al - le - lú - ia



## Verse

*Benedictus qui venit.*

*Mark 11 : 9. 10*

Blessèd is he who comes in the name *of the Lord* ! \*

Blessèd is the kingdom of our father David / that *is to come* !

# Sunday XXXIV. Christ the King

## Offertory

*Postula a me.*

*Psalm 2 : 8*

4 A. Ask of me \* and I will give you the na- tions for an in- her- i- tance

Musical notation for the first part of the offertory. It consists of a vocal line in the treble clef and a piano accompaniment in the bass clef. The key signature is G minor (one flat). The melody is a simple, rhythmic line with eighth and quarter notes. The piano accompaniment provides a harmonic foundation with chords and moving lines.

and the ends of the earth for your pos- ses- sion.

Musical notation for the second part of the offertory. It continues the vocal line and piano accompaniment from the first part. The melody concludes with a final cadence. The piano accompaniment also concludes with a final chord.

Melody by Columba Kelly, O.S.B. Harmonization by Samuel F. Weber, O.S.B.

## Verse

*Ego autem constitutus sum rex.*

*Psalm 2*

4 A. I my- self have set up my king \* on Si- on my ho- ly moun- tain.

Musical notation for the verse. It consists of a vocal line in the treble clef and a piano accompaniment in the bass clef. The key signature is G minor (one flat). The melody is a simple, rhythmic line with eighth and quarter notes. The piano accompaniment provides a harmonic foundation with chords and moving lines.

## SATB harmony verse, p. 13

Chant melodies and organ harmonies arranged after traditional sources by Samuel F. Weber, O.S.B.  
© 2005 Saint Meinrad Archabbey, St. Meinrad, IN 47577-1010 U.S.A. All rights reserved. EMAIL : webersf@wfu.edu

# Sunday XXXIV. Christ the King

## OFFERTORY

Suggested performance :

1. ANTIPHON : " Ask of me "
2. CHANT VERSE : " I myself "
3. HARMONY VERSE : " Serve the Lord "
4. CHANT VERSE : " Ask of me "

### 1. Chant Verse

4.A. I my- self have set up my king \* on Si- on my ho- ly moun-tain.

Musical notation for the Chant Verse. It consists of two staves: a treble clef staff and a bass clef staff. The key signature has two flats (B-flat and E-flat), and the time signature is 4/4. The melody is written in the treble staff, and the organ accompaniment is in the bass staff. The piece ends with a double bar line.

### 2. Harmony Verse. Unison with organ or SATB *a cappella*

Serve the Lord with fear, / and re- | joice be- fore him ; \*

Musical notation for the Harmony Verse. It consists of two staves: a treble clef staff and a bass clef staff. The key signature has two flats (B-flat and E-flat), and the time signature is 4/4. The melody is written in the treble staff, and the organ accompaniment is in the bass staff. The piece ends with a double bar line.

with trembling, | pay him your hom- age. *Ant.* Ask of me.

Musical notation for the Harmony Verse. It consists of two staves: a treble clef staff and a bass clef staff. The key signature has two flats (B-flat and E-flat), and the time signature is 4/4. The melody is written in the treble staff, and the organ accompaniment is in the bass staff. The piece ends with a double bar line.

Based on a tone by Carlo Rossini

# Sunday XXXIV. Christ the King

## Communion

*Sedebit Dominus rex.*

*Psalm 28*

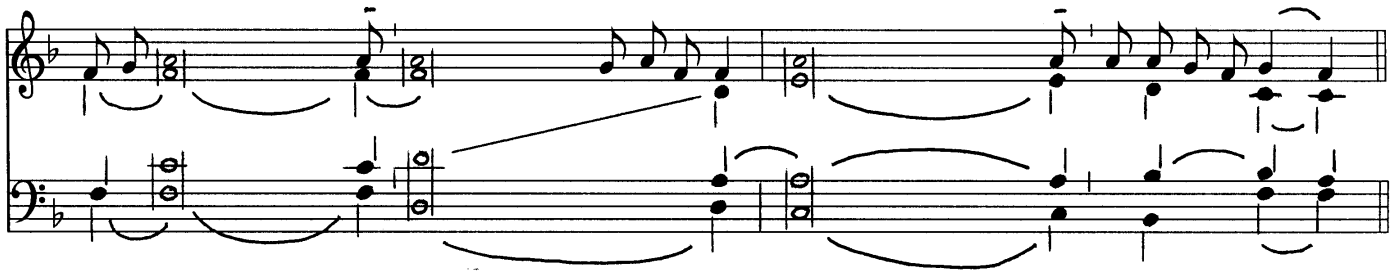
6. The Lord will reign \* for ev- er ; and will give his peo- ple the gift of peace.



Suggested performance practice : 1. Antiphon, 2. Chant verse, 3. Harmony verse, 4. Antiphon repeated.

### PSALM VERSES. Psalm 22 (unison, with organ)

6. You prepare a table before me in the presence of my en- e- mies ; \* you anoint my head with oil, my cup o- ver-flows.



(unison, with organ or SATB *a cappella*)

Surely goodness and kindness  
shall follow me / all the

days of my life ; and I shall dwell in the | house of the Lord for- ev- er.



Based on a tone by Carlo Rossini

# Sunday XXXIV. Christ the King

## Communion

*Sedebit Dominus rex.*

*Psalm 28*

6. The Lord will reign \* for ev- er ; and will give his peo- ple the gift of peace.



### PSALM VERSES. Unison with organ or SATB

*Sedebit Dominus rex.*

*Psalm 28*



1. O Lord, with your judgment en- | dow the **King**,  
and with your justice the **King's** son.  
He shall govern your people with **justice**  
and your af- | **flicted** ones with **judgment**. (R.)

2. The mountains shall yield | peace for the **people**,  
and the hills **justice**.  
He shall defend the afflicted among the **people**,  
save the | **children of the poor**. (R.)

3. May he endure as | **long as the sun**, \*  
and like the moon through all *generations*.  
Justice shall flower in his **days**, \*  
and profound peace, / till the | **moon** be *no more*. (R.)

4. Glory be to the Father, and | to the **Son**, \*  
and to the *Holy Spirit*.  
As it was in the beginning, / is now, and ever **shall be**, \*  
| **world** without end. **Amen**. (R.)

## **Sunday XXXIV. Christ the King**

### **A NOTE ON THE PERFORMANCE OF THE INTROIT**

*The settings given here are arranged for Prince of Peace Church, where they are performed thus :*

#### **ENTRANCE PROCESSION**

1. The bell rings. All stand.
2. Celebrant and ministers begin the procession.
3. The choir sings the Introit Antiphon, Psalm Verse, *Gloria Patri*, and repeats the Introit Antiphon *recto tono*.

#### **INCENSATION OF THE ALTAR AND CRUCIFIX**

4. The choir is concluding the Introit as the celebrant and ministers reach the altar. They reverence. The celebrant begins to fill the thurible with incense.
5. The organ intones the chorale melody for the metrical hymn, playing the whole melody through once.
6. Choir and congregation sing the metrical Psalm as the celebrant is incensing the altar and crucifix.
  - a. The whole Psalm may be sung in unison by all.
  - b. The choir may alternate with the congregation, singing the even number verses in unison, or in four part harmony, *a capella*. This is indicated in the program.
  - c. The organist may provide organ interludes. Festive instruments may be used on greater feasts. Varied hymn accompaniments are encouraged from verse to verse.

#### **AT THE CHAIR**

7. The celebrant concludes the incensation, and takes his place at the chair. The metrical Psalm concludes.
  - a. The singing of the metrical Psalm is timed so as to conclude with the arrival of the celebrant at the chair.
  - b. Some verses of the metrical Psalm may be omitted if they are not needed. The final verse, the Doxology, is always included and never omitted.
  - c. The Introit covers the action of the entrance of celebrant and ministers and the incensation of the altar. The singing should not be unduly prolonged at this point, although it may continue a bit if necessary.

#### **PSALM VERSES**

8. Psalm verses are provided for other communities if they choose not to use the metrical Psalm version. As indicated, the Introit Antiphon is repeated after the verses.

#### **ADAPTATION**

9. Prince of Peace is a large church in the romanesque style that allows for an extended entrance rite. Smaller churches and communities will adapt this plan to suit their particular needs.



# Sunday XXXIV. Christ the King

Psalm during Communion

Psalm Tone. Mode 5



## Verses

*Dominus regit me.*

*Ps 22*

1. The Lord is my shepherd ; I *shall not want* ;  
he makes me lie down in *green pastures*.  
he leads me *beside still waters* ;  
he refreshes my *soul*. (R̄.)
2. Even though I walk through the valley of the shadow of **death**,  
I fear no evil ; / for you are at my side  
with your rod *and your staff*  
that give me comfort. (R̄.)
3. You prepare a table **before** me  
in the sight of my **foes** ;  
you anoint my *head with oil* ,  
my cup overflows. (R̄.)
4. Surely goodness and mercy *shall follow* me  
all the days of my **life** ;  
and I shall dwell in the house of *the Lord*  
for years to **come**. (R̄.)

Sunday XXXIV. Christ the King

ALLELUIA

Alleluia 1

Al - le - - - - - lú - ia. \*

Ÿ. Po - té - stas é - jus, po - té -

stas æ - tér - na, quæ non

au - fe - ré - tur: et

ré - gnum é - jus, \* quod non cor - rum -

pé - tur.

D.C.

# Sunday XXXIV. Christ the King

## Offertory : Verse

SATB or unison with organ accompaniment

*Illumina faciem tuam.*

*Ps 118 : 135. 127 (Vulg.)*

8. Let your countenance shine up- on your ser- vant : for I love your commands

Musical notation for the first line of the offertory verse. It consists of two staves: a treble clef staff and a bass clef staff. The key signature has one flat (B-flat). The melody is written in the treble clef, and the accompaniment is in the bass clef. The music is in a simple, homophonic style with a steady rhythm.

more than gold, how- ev- er fine. *Ant.* Di- rect my steps.

Musical notation for the second line of the offertory verse. It consists of two staves: a treble clef staff and a bass clef staff. The key signature has one flat (B-flat). The melody is written in the treble clef, and the accompaniment is in the bass clef. The music is in a simple, homophonic style with a steady rhythm. There are some handwritten annotations: a '+' sign above the word 'organ' and a '4' below the treble staff in the second measure of the second line.

Based on a psalm tone by Carlo Rossini

# NOTE ON CHANTING ENGLISH PSALM TONES

Sample : Tone 7 d



Adapted from a tone by Tobias Colgan, O.S.B. Harmonization by Samuel F. Weber, O.S.B.

## Verses

*Conserva me, Domine.*

*Ps 15*

1. Keep **me**, O **God**,  
for in you *I take* **refuge** ;  
I say to the Lord, / “ You are my **God**.  
I have no good *apart from* **you**. ” (Ant.)
2. The Lord is my chosen portion *and my* **cup** ;  
you hold *fast my* **lot**.  
The lines have fallen for me in *pleasant* **places** ;  
yes, / I have a *goodly* **heritage**. (Ant.)
3. I will bless the Lord who *gives me* **counsel** ;  
in the night also my *heart instructs* me.  
I keep the Lord *always before* me ;  
because he is at my right hand, /  
I shall *not be* **moved**. (Ant.)
4. Therefore, my heart is glad and my *soul rejoices* ;  
my body also *dwells secure*.  
You will show me the *path of* **life** ;  
at your right hand are pleasures for *evermore*. (Ant.)

## NOTES

*English Psalm Tones are based on :*

1. ONE FINAL ACCENT — indicated in **BOLD** type.
2. ONE OR TWO PREPARATORY SYLLABLES before the one final accent — indicated in *ITALIC*.
3. UNDERLINED SYLLABLE — indicates where the harmony changes after the reciting tone and before the final accent. Not every line will have such a change. This sign is important for the organist, or for those voices that change when singing the tones SATB.
4. The tones are designed to be sung in unison with organ accompaniment, or SATB *a cappella*.