

**SUNDAYS OF LENT  
PALM SUNDAY**

**Simple Psalm Tone Settings**

**‘Proper’ of the Mass**

**Set to Gregorian Tones  
With Organ Accompaniment**

by

**Samuel F. Weber, O.S.B.**



2006

## Acknowledgements

The English translation of the Psalm responses, the Gospel Acclamation verses, from *The Lectionary for Mass* © 1968, 1981, 1997, ICEL ; the English translation of the Entrance and Communion Antiphons from *The Roman Missal* © 1973 ICEL, Washington, D.C. All rights reserved.

Translations of the Offertory Verse and Psalms for the Introit and Communion prepared by the editor to accord with the requirements of *Liturgiam Authenticam*. These translations are based on the *Douai-Reims version*, as well as *The Book of Psalms* © 1950 and 1995 by the Confraternity of Christian Doctrine, Washington, D.C., and *The Revised Standard Version*, An Ecumenical Edition © 1973 by Division of Christian Education of the National Council of Churches of Christ in the United States of America.

Harmonizations of Latin Psalm tones adapted by the editor from the settings of Carlo Rossini in his classic work '*Proper*' of the *Mass for the Entire Liturgical Year*, 1933 ff., and from the various harmonizations of Achille Bragers.

English tones and harmonizations by Samuel F. Weber, O.S.B.

Musical settings and compilation © 2005 Saint Meinrad Archabbey, St. Meinrad, IN 47577 U.S.A. All rights reserved.

On the cover : MEDIEVAL CHOIR, Anonymous woodcut from *Der Spiegel des Menschlichen lebens*. Augsburg, 1479.

Contact the editor :

Rev. Samuel F. Weber, O.S.B.  
Wake Forest University  
The Divinity School  
Box 7719  
Winston-Salem, NC 27109-7719 U.S.A.  
TEL 336.758.4289  
EMAIL webersf@wfu.edu

---

One copy of this project is made available to interested parties for educational purposes only, on a not-for-profit, not for publication basis, for private distribution only. It is hoped that this project will result in a permanent resource once the expected English translation of the *Missale Romanum* (2003) is promulgated.

In order to satisfy a number of requests, I have prepared this little “Sampler” of settings of the ‘Proper’ of the Mass. Those asking for these settings tell me they value:

1. Devotion to the Word of God, in particular, to the Book of Psalms as the “Prayerbook” of the Church.
2. A desire to “Sing the Mass” rather than to “Sing *at* the Mass.” The Proper parts of the Mass given in the *Roman Missal* represent the authentic piety of the Liturgy, and best nourish the spiritual needs of the faithful.
3. Sacred texts that focus on devotion to God, divine realities, the transcendent, the mysteries of the Liturgical Year, sin and repentance, and the gifts of grace.
4. Music that draws its inspiration from the traditional chant and polyphony of the Church.
5. Organ accompaniments that adorn and heighten the word of God, without being flashy or calling an inordinate attention to themselves.
6. Options that are simple enough for beginning cantors and choirs, and require a minimum of rehearsal time.
7. In addition, options that are more challenging, and call to mind the sound and atmosphere, evoke the “ethos,” of the traditional chants of the *Graduale Romanum*, while using the officially approved English texts.

To this end, I am including here some “sketches” of possibilities. If you, the recipient, have time, please assist with this project. Provide feedback as to your needs, what works and doesn’t work, what is not included here that you would like to see, and any other points of interest and concern.

A new translation of the *Missale Romanum* is expected soon. With the advent of this translation, will it be time to make available an English *Gradual* in the styles of traditional Catholic church music included herein?

I am eager to hear from you. Email works best for me.

Rev. Samuel F. Weber, O.S.B.  
Wake Forest University  
The Divinity School  
Box 7719  
Winston-Salem, NC 27109-7719

TEL 336.758.4289 EMAIL [webersf@wfu.edu](mailto:webersf@wfu.edu)

# ' PROPER ' OF THE MASS SUNDAYS OF LENT

## PART I : Most simple settings

*Texts of the 'Propers' Pointed for Chanting by Congregation, Cantor or Choir*

### *Introit, Offertory and Communion*

- Two simple Psalm Tone formulas (Mode I D and Mode VII a)
- Choose one or the other, as seems best. It doesn't matter which tone is used.
- May be sung
  - *a capella* in unison
  - in unison with organ accompaniment
  - *a capella* SATB
- The same system of pointing works for both tones
  - 1 final accent, indicated by **bold** type
  - 1 or 2 preparatory syllables, indicated by *italics*

### *Responsorial Psalm and Gospel Acclamation*

- One simple Psalm Tone formula (Mode V c)
- **Responsorial Psalms:** Refrains only given here
  - Cantor uses the same tone for the Psalm verses
  - Text as given in the Lectionary, not included here
- **Gospel Acclamations:** Acclamation and Proper Verses
  - Verses may be sung
    - *a capella* in unison
    - in unison with organ accompaniment
    - *a capella* SATB
  - System of pointing for melody line
    - 1 final accent, indicated by **bold** type
    - 1 or 2 preparatory syllables, indicated by *italics*
  - System of pointing for organ accompaniment/SATB (effects ATB part only)
    - 2 final accents, indicated by **bold** type
    - harmonic movement takes place on **first** accent
    - in some cases, this accent may coincide with second preparatory note, in which case the *syllable* is both bold and italic
    - Alto provides suspension at the final cadence as indicated in option B

‘ PROPER ’ OF THE MASS  
SUNDAYS OF LENT

[A] Mode VII a

[B] Mode I D

2 1 /                      1 /                      2 1 /                      1 /

**FIRST SUNDAY OF LENT**

**INTROIT Ps 90:15-16**

1. When he calls to me, I will answer ; †  
I will rescue him and *give him honor*. \*  
Long life and contentment will *be his*.

**OFFERTORY Ps 90:15-16**

2. With his pinions the Lord will cover you , †  
and under his wings / you *will take refuge* ; \*  
his faithfulness is a buckler *and shield*.

**COMMUNION Mt 4:4**

3. One does not live on *bread alone*, \*  
but on every word †  
that comes from the mouth *of God*.

**COMMUNION Ps 90:4**

4. The Lord will *overshadow you*, \*  
and you will find refuge †  
under *his wings*.

**SECOND SUNDAY OF LENT**

**INTROIT Ps 24:6.3.22**

5. Remember your *mercies, Lord*, \*  
your tenderness from *ages past*.  
Do not let our enemies triumph *over us*; \*  
O God, deliver Israel / from all her *distress*.

**INTROIT Ps 26:8.9**

6. My heart has prompted me to *seek your face*; \*  
I seek it, Lord; / do not hide *from me*.

**OFFERTORY Ps 118:17-18**

7. I will delight in *your commands*, \*  
which I love *exceedingly*;  
and I will lift up my hands to *your commands*, \*  
which *I love*.

**COMMUNION Mt 17:5**

8. This is my Son, my beloved, †  
in whom is all *my delight* : \*  
listen *to him*.

**THIRD SUNDAY OF LENT**

**INTROIT Ps 24:15-16**

9. My eyes are ever fixed *on the Lord*, \*  
for he releases my feet from *the snare*.  
O look at me *and be merciful*, \*  
for I am wretched and *alone*.

**INTROIT Ez 36:23-26**

10. I will prove my holiness *through you*. \*  
I will gather you from the ends *of the earth*;  
I will pour clean water on you †  
and wash away *all your sins*. \*  
I will give you a new spirit within you, †  
says *the Lord*.

**OFFERTORY Ps 18:9-12**

11. The precepts of the *Lord are right*, \*  
rejoicing *the heart*,  
and his ordinances are sweeter †  
than syrup or honey *from the comb*; \*  
therefore your servant is careful *of them*.

**COMMUNION Jn 4:13-14**

12. Whoever drinks the water that I shall give him, †  
*says the Lord*, \*  
will have a spring inside him, †  
welling up for *eternal life*.

**COMMUNION Ps 83:4-5**

13. The sparrow even finds a home, †  
the swallow *finds a nest* \*  
wherein to place *her young*,  
near to your altars, / *Lord of hosts*, \*  
my King, *my God!*  
How happy they who dwell *in your house!* \*  
For ever they are *praising you*.

# ‘ PROPER ’ OF THE MASS SUNDAYS OF LENT

[A] Mode VII a

[B] Mode I D

2 1 /                      1 /                      2 1 /                      1 /

## FOURTH SUNDAY OF LENT

INTROIT Cf. Is 60:10-11

14. Rejoice, Jerusalem! †  
Be glad for her, *you who love her*; \*  
rejoice with her, / *you who mourned for her*,  
And you will *find contentment* \*  
at her consoling **breasts**.

OFFERTORY Ps 134:3. 6

15. Praise the Lord, for *he is good*; \*  
sing praise to his name, / for *he is loving*;  
all that he *wills he does* \*  
in heaven *and on earth*.

Year A: COMMUNION Cf. Jn 9:11

16. The Lord rubbed my eyes : †  
I went away *and washed*; \*  
then I could see, / and I believed *in God*.

Year B: COMMUNION Ps 121:3-4

17. To Jerusalem, / that binds them together *in unity*, \*  
the tribes of the Lord go up to give *him praise*.

Year C: COMMUNION Lk 15:32

18. My son, / you should rejoice, †  
because your brother was dead †  
and has come *back to life*; \*  
he was lost and *is found*.

## FIFTH SUNDAY OF LENT

INTROIT Ps 42:1-2

19. Give me *justice, O God*, \*  
and defend my cause against *the wicked*;  
rescue me from deceitful and *unjust men*. \*  
You, O God, are *my refuge*.

OFFERTORY Ps 118:7. 10. 17. 107

20. I praise *you, O Lord*, \*  
with all *my heart*;  
be good *to your servant*, \*  
that I may live and keep *your words*.  
O Lord, *give me life* \*  
according to *your word*.

Year A: COMMUNION Jn 11:26

21. He who believes in me †  
will not *die for ever*, \*  
*says the Lord*.

Year C: COMMUNION Jn 8:10-11

22. Has no one condemned you? †  
The *woman answered*: \*  
*No one, Lord*.  
Neither do *I condemn you*: \*  
go and do not sin *again*.

COMMUNION Jn 12:24-25

23. I tell you solemnly; †  
Unless a grain of wheat / falls on the *ground and dies*; \*  
it remains a *single grain*;  
but *if it dies*, \*  
it yields a *rich harvest*.

# ‘ PROPER ’ OF THE MASS SUNDAYS OF LENT

[A] Mode VII a

[B] Mode I D

2 1 /

1 /

2 1 /

1 /



## PALM SUNDAY

INTROIT Ps 42:1-2

24. Six days before the *solemn passover* \*  
the Lord came to *Jerusalem*,  
and children waving *palm branches* \*  
ran out to welcome **him**.  
They loudly *praised the Lord*: \*  
Hosanna in *the highest*.  
Blessed are you who have *come to us* \*  
so rich in love *and mercy*.

OFFERTORY Ps 68:21-22

25. Insult has broken my heart, / and I am weak; †  
I looked for sympathy, / but *there was none*; \*  
for comforters, / and **I found** none.  
Rather they put gall *in my food* \*  
and in my thirst / they gave me vinegar *to drink*.

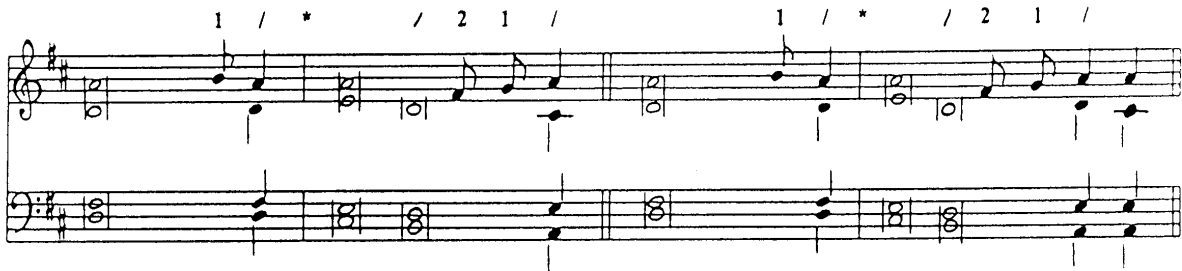
COMMUNION Mt 26:42

26. Father, / if this cup may not pass, †  
but **I must drink** it, \*  
then your will *be done*.

# ‘ PROPER ’ OF THE MASS SUNDAYS OF LENT RESPONSORIAL PSALMS

[A] Mode V c (ending in one syllable)

[B] Mode V c (ending in two or more syllables)



## REFRAINS FOR THE RESPONSORIAL PSALMS

### FIRST SUNDAY OF LENT

27. A. Be merciful, *O Lord*, \*  
for *we have sinned*
28. B. Your ways, O Lord, are love *and truth* \*  
to those who *keep your covenant*.
29. C. Be with *me, Lord*, \*  
when *I am in trouble*.

### SECOND SUNDAY OF LENT

30. A. Lord, let your mercy be *on us*, \*  
as we place our *trust in you*.
31. B. I will walk before *the Lord*, \*  
in the *land of the living*.
32. C. The Lord is *my light* \*  
and *my salvation*.

### THIRD SUNDAY OF LENT

33. A. If today you hear *his voice*, \*  
harden *not your hearts*.
34. B. Lord, / you have *the words* \*  
of *everlasting life*.
35. C. \* The Lord is *kind and merciful*.  
(*second phrase only*)

### FOURTH SUNDAY OF LENT

36. A. The Lord is *my shepherd*; \*  
there is nothing *I shall want*.
37. B. Let my tongue *be silenced*, \*  
if I *ever forget you*.
38. C. Taste *and see* \*  
the goodness *of the Lord*.

### FIFTH SUNDAY OF LENT

39. A. With the Lord there *is mercy* \*  
and fullness *of redemption*.
40. B. Create a *clean heart* \*  
in *me, O God*.
41. C. The Lord has done great things *for us*; \*  
we are *filled with joy*.

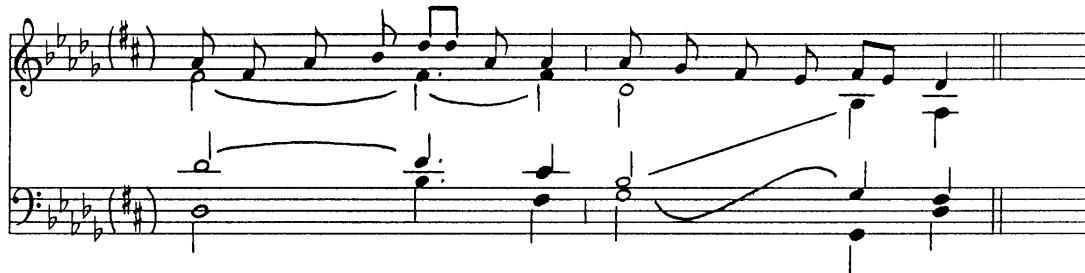
### PALM SUNDAY

42. My God, *my God*, \*  
why have *you abandoned me*?



‘ PROPER ’ OF THE MASS  
SUNDAYS OF LENT  
GOSPEL ACCLAMATION

℞ Praise to you, Lord Je- sus Christ, King of end- less glo- ry.



[A] Mode V c (ending in one syllable)

[B] Mode V c (ending in two or more syllables)



**GOSPEL ACCLAMATION – Refrain**

43. Praise to you, Lord Jesus Christ, \*  
King of *endless* glory.

**FIRST SUNDAY OF LENT – Verse**

44. One does not live by bread *alone*, \*  
but on every word that comes †  
from the *mouth* of God.

**SECOND SUNDAY OF LENT – Verse**

45. From the shining cloud the Father’s voice *is heard*: \*  
This is my beloved Son, †  
*listen to him*.

**THIRD SUNDAY OF LENT – Verse**

46. A. Lord, / you are truly the Savior of *the world*; \*  
give me living water, †  
that I may never *thirst again*.  
47. B. God so loved the world †  
that he gave his only Son, \*  
so that every one who believes in him †  
might have *eternal life*.  
48. C. Repent, / says *the Lord*; \*  
the kingdom of heaven *is at hand*.

**FOURTH SUNDAY OF LENT – Verse**

49. A. I am the light of the world, says *the Lord*; \*  
whoever follows me †  
will have the *light of life*.

50. B. God so loved the world †  
that he gave his *only* Son, \*  
so that every one who believes in him †  
might have *eternal life*.

51. C. I will get up and go to my Father †  
and shall say *to him*: \*  
Father, / I have sinned †  
against heaven *and against you*.

**FIFTH SUNDAY OF LENT – Verse**

52. A. I am the resurrection and the life, /  
says *the Lord*; \*  
whoever believes in me will *never die*.  
53. B. Whoever serves me must follow me, /  
says *the Lord*; \*  
and where I am, †  
there also will my *servant be*.  
54. C. Even now, says the Lord, †  
return to me with your *whole heart*; \*  
for I am *gracious and merciful*.

**PALM SUNDAY – Verse**

55. Christ became obedient to the point of *death*,  
even *death on a cross*. \*  
Because of this, / God greatly exalted him \*  
and bestowed on him the name †  
which is *above every name*.