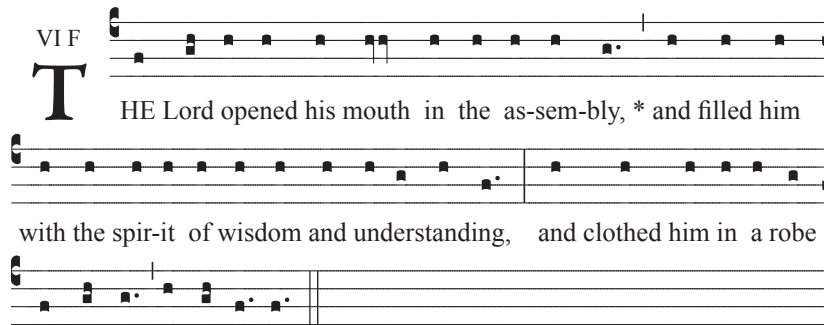


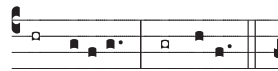
COMMON OF DOCTORS DURING PASCHALTIDE

Introit

VI F



**T** HE Lord opened his mouth in the as-sem-bly, \* and filled him  
with the spir-it of wisdom and understanding, and clothed him in a robe  
of glo-ry, al- le- lu- ia.



- ℣. 1 It is good to give thanks *to the Lord*, \*  
to make music to your Name, O *Most High*. (℟)
- ℣. 2 The just man shall flourish *like the palm tree*, \*  
like a cedar of Lebanon shall *he grow*. (℟) *Ps 91*

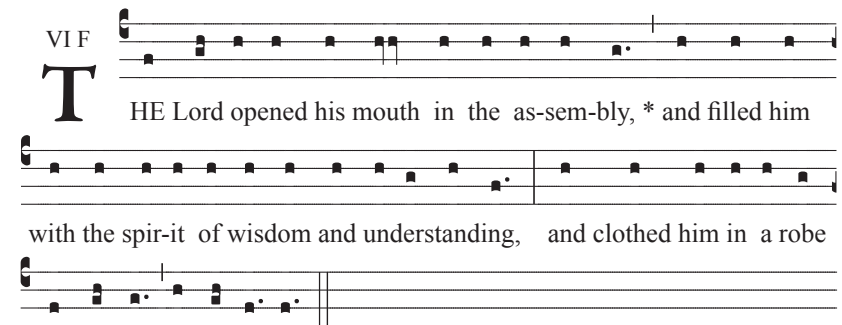
---

Chant settings by Fr. Samuel F. Weber, O.S.B. Institute of Sacred Music, Archdiocese of Saint Louis, 5200 Glennon Drive, St. Louis, MO 63119-4330 Copyright © 2009 Saint Meinrad Archabbey, St. Meinrad, IN 47577-1010 U.S.A. All rights reserved. Used with permission. [weber@kenrick.edu](mailto:weber@kenrick.edu)

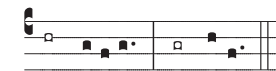
COMMON OF DOCTORS DURING PASCHALTIDE

Introit

VI F



**T** HE Lord opened his mouth in the as-sem-bly, \* and filled him  
with the spir-it of wisdom and understanding, and clothed him in a robe  
of glo-ry, al- le- lu- ia.



- ℣. 1 It is good to give thanks *to the Lord*, \*  
to make music to your Name, O *Most High*. (℟)
- ℣. 2 The just man shall flourish *like the palm tree*, \*  
like a cedar of Lebanon shall *he grow*. (℟) *Ps 91*

---

Chant settings by Fr. Samuel F. Weber, O.S.B. Institute of Sacred Music, Archdiocese of Saint Louis, 5200 Glennon Drive, St. Louis, MO 63119-4330 Copyright © 2009 Saint Meinrad Archabbey, St. Meinrad, IN 47577-1010 U.S.A. All rights reserved. Used with permission. [weber@kenrick.edu](mailto:weber@kenrick.edu)