

**7 Oct. OUR LADY OF THE ROSARY
4 Nov. SAINT CHARLES BORROMEIO
COMMON OF PASTORS
TWO ANTIPHONS FOR FEASTS OF SAINTS**

'Proper' of the Mass

**Set to Gregorian Psalm-tones
With Organ Accompaniment**

by

Samuel F. Weber, O.S.B.



2005

The 'Proper' of the Mass
for Sundays and Solemnities of the Liturgical Year
commissioned by
Prince of Peace Catholic Church,
Taylors, SC.

2005

Acknowledgements

The English translation of the Psalm responses, the Gospel Acclamation verses, from *The Lectionary for Mass* © 1968, 1981, 1997, ICEL ; the English translation of the Entrance and Communion Antiphons from *The Roman Missal* © 1973 ICEL, Washington, D.C. All rights reserved.

Translations of the Psalms taken from *The Book of Psalms* © 1950 and 1995 by the Confraternity of Christian Doctrine, Washington, D.C.

Translation of the Offertory Verse from *Douai-Reims version*.

Harmonizations of Latin Psalm tones adapted by the editor from the settings of Carlo Rossini in his classic work '*Proper*' of the Mass for the Entire Liturgical Year, 1933 ff.

English tones and harmonizations by Samuel F. Weber, O.S.B.

Musical settings and compilation © 2005 Saint Meinrad Archabbey, St. Meinrad, IN 47577 U.S.A. All rights reserved.

Contact the editor :

Rev. Samuel F. Weber, O.S.B.
Box 7719
Winston-Salem, NC 27109-7719 U.S.A.
TEL 336.758.4289
EMAIL webersf@wfu.edu

ORGAN ACCOMPANIMENT

OUR LADY OF THE ROSARY

Responsorial Psalm

REFRAIN

Lk 1 : 49

- A -

8. The Al-might- y has done great things for me, and

ho- ly is his Name.

- B -

8. The Al-might- y has done great things for me, and


ho- ly is his Name.

October 7. Our Lady of the Holy Rosary

Psalm Verses

Lk 1 : 46-55

A B C D



Psalm tone melody by Tobias Colgan, O.S.B.

Verses

Lk 1 : 46-55

- A 1. My soul proclaims the greatness of the **Lord**, *
D my spirit rejoices in God my **Savior**. (R.)
2. For he has looked upon his *lowly servant*.
From this day all generations will *call me blessed* :
the almighty has done great *things for me*,
and holy *is his Name*. (R.)
3. He has mercy on *those who fear* him
in every *generation*.
He has shown the strength of his **arm**,
he has scattered the proud in *their conceit*. (R.)
4. He has cast down the *might from their thrones*,
and has lifted *up the lowly*.
He has filled the hungry with **good** things,
and the rich he has sent away empty. (R.)
5. He has come to the help of his *servant Israel*
for he has remembered his *promise of mercy*,
the promise he made to our fathers,
to Abraham and his children forever. (R.)

Underlined syllable indicates where the organist places the change of intervening chord.

October 7. Our Lady of the Holy Rosary

Alleluia

7. Al- le- lu- ia, al- le- lu- ia, al- le- lu- ia.

Musical notation for the first Alleluia line, consisting of a treble and bass staff in D major (two sharps) and 7/4 time. The melody is written in the treble clef, and the organ accompaniment is in the bass clef. The piece concludes with a double bar line.

7. Hail, Mar- y, full of grace, the Lord is with you ;

Musical notation for the second Alleluia line, consisting of a treble and bass staff in D major (two sharps) and 7/4 time. The melody is written in the treble clef, and the organ accompaniment is in the bass clef. The piece concludes with a double bar line.

bles- ed are you a- mong wo- men.

Musical notation for the third Alleluia line, consisting of a treble and bass staff in D major (two sharps) and 7/4 time. The melody is written in the treble clef, and the organ accompaniment is in the bass clef. The piece concludes with a double bar line.

November 4. Saint Charles Borromeo, Bishop

Responsorial Psalm

REFRAIN

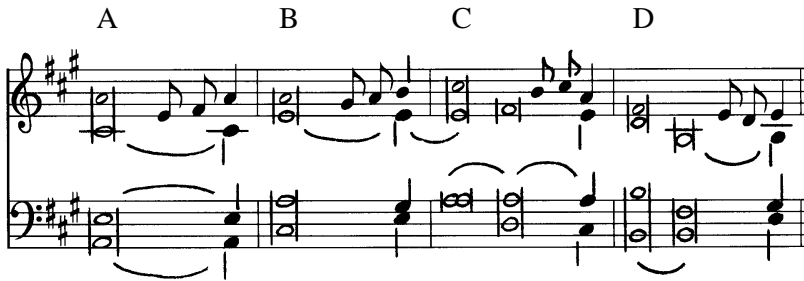
Ps 88 : 2a

8. For- ev- er I will sing the goodness of the Lord.



Psalm Verses

Lk 1 : 46-55



1. The favors of the Lord I will *sing forever* ;
through all generations my mouth shall *proclaim your faithfulness*.
For you have said, / “ My kindness is *established forever* ” ;
in heaven you have *confirmed your faithfulness*. (R.)
2. “ I have made a covenant *with my chosen one*,
I have sworn to David *my servant* :
Forever will I *confirm your posterity*
and establish your *throne* for all *generations*. ” (R.)
3. “ I have found David, *my servant* ;
with my holy oil I *have anointed him*,
That my hand may *always be with him*,
and that my arm may *make him strong*. ” (R.)
4. “ My faithfulness and my mercy *shall be with him*,
and through my name shall his horn *be exalted*.
He shall say of me, / ‘ *You are my father*,
my God, my *rock, my Savior*. ’ ” (R.)

November 4. Saint Charles Borromeo, Bishop

7. Al- le- lu- ia, al- le- lu- ia, al- le- lu- ia.

Musical notation for the first system of the hymn. It consists of two staves: a treble clef staff and a bass clef staff. The key signature is two sharps (F# and C#), and the time signature is 4/4. The melody is written in the treble clef, and the bass line is in the bass clef. The music features a mix of eighth and quarter notes, with some rests and ties.

7. I am the Good Shepherd, says the Lord ; I know

Musical notation for the second system of the hymn. It consists of two staves: a treble clef staff and a bass clef staff. The key signature is two sharps (F# and C#), and the time signature is 4/4. The melody is written in the treble clef, and the bass line is in the bass clef. The music features a mix of eighth and quarter notes, with some rests and ties.

my sheep, and mine know me.

Musical notation for the third system of the hymn. It consists of two staves: a treble clef staff and a bass clef staff. The key signature is two sharps (F# and C#), and the time signature is 4/4. The melody is written in the treble clef, and the bass line is in the bass clef. The music features a mix of eighth and quarter notes, with some rests and ties.

November 4. Saint Charles Borromeo, Bishop

Offertory

Inveni David servum meum.

Psalm 88 : 21-22 (Vulg.)

8. I have found * Da- vid my ser- vant,

Musical notation for the first line of the offertory. It consists of a treble clef staff and a bass clef staff. The treble staff contains a melodic line with eighth and sixteenth notes, and the bass staff contains a harmonic accompaniment with chords and moving lines. The lyrics 'I have found * Da- vid my ser- vant,' are written below the treble staff.

with my ho- ly oil I

Musical notation for the second line of the offertory. It consists of a treble clef staff and a bass clef staff. The treble staff contains a melodic line with eighth and sixteenth notes, and the bass staff contains a harmonic accompaniment. The lyrics 'with my ho- ly oil I' are written below the treble staff.

have an-noint-ed him ; for my hand shall help

Musical notation for the third line of the offertory. It consists of a treble clef staff and a bass clef staff. The treble staff contains a melodic line with eighth and sixteenth notes, and the bass staff contains a harmonic accompaniment. The lyrics 'have an-noint-ed him ; for my hand shall help' are written below the treble staff.

him, and my arm shall make him

Musical notation for the fourth line of the offertory. It consists of a treble clef staff and a bass clef staff. The treble staff contains a melodic line with eighth and sixteenth notes, and the bass staff contains a harmonic accompaniment. The lyrics 'him, and my arm shall make him' are written below the treble staff.

strong.

Musical notation for the fifth line of the offertory. It consists of a treble clef staff and a bass clef staff. The treble staff contains a melodic line with eighth and sixteenth notes, and the bass staff contains a harmonic accompaniment. The lyrics 'strong.' are written below the treble staff.

Offertory

Performance

1. Offertory Verse. (whole schola)
2. Psalm Verse. (cantors)
3. Repetition of Offertory Verse. (whole schola)

Psalm Verse at the Offertory

Memento, Domine, David.

Psalm 131 : 1 (Vulg.)

8. O Lord, re-mem-ber Da- vid, * and all his

Musical notation for the first part of the Psalm Verse. It consists of two staves: a vocal line in the treble clef and an organ accompaniment in the bass clef. The key signature has one flat (B-flat). The vocal line begins with a dotted quarter note, followed by eighth notes, and includes a slur over a group of notes. The organ accompaniment provides harmonic support with chords and moving lines.

meek- ness.

Musical notation for the second part of the Psalm Verse. It consists of two staves: a vocal line in the treble clef and an organ accompaniment in the bass clef. The key signature has one flat (B-flat). The vocal line features a dotted quarter note followed by a half note. The organ accompaniment continues with harmonic support.

Common of Pastors

Offertory (Psalm Tone Version)

Inveni David servum meum.

Psalm 88 : 21-22 (Vulg.)

8. I have found David my ser- vant, * and with my ho-ly

Musical notation for the first line of the offertory. It consists of a treble clef staff and a bass clef staff, both in a key signature of two flats (B-flat and E-flat). The treble staff contains a melody of eighth and quarter notes, with a fermata over the final note. The bass staff provides a harmonic accompaniment with chords and moving lines.

oil I have a-noint-ed him ; for my hand shall help him, *

Musical notation for the second line of the offertory. It consists of a treble clef staff and a bass clef staff, both in a key signature of two flats. The treble staff contains a melody of eighth and quarter notes, with a fermata over the final note. The bass staff provides a harmonic accompaniment with chords and moving lines.

and my arm shall make him strong.

Musical notation for the third line of the offertory. It consists of a treble clef staff and a bass clef staff, both in a key signature of two flats. The treble staff contains a melody of eighth and quarter notes. The bass staff provides a harmonic accompaniment with chords and moving lines.

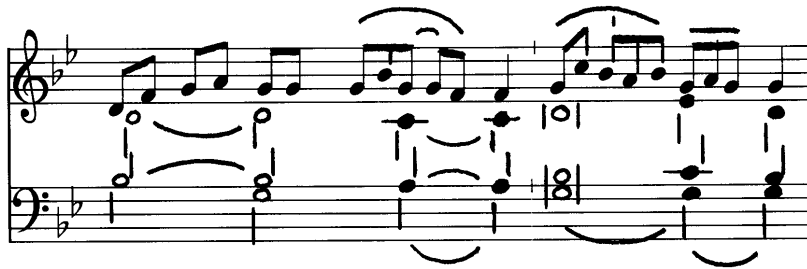
Common of Pastors

Offertory (During Paschaltide)

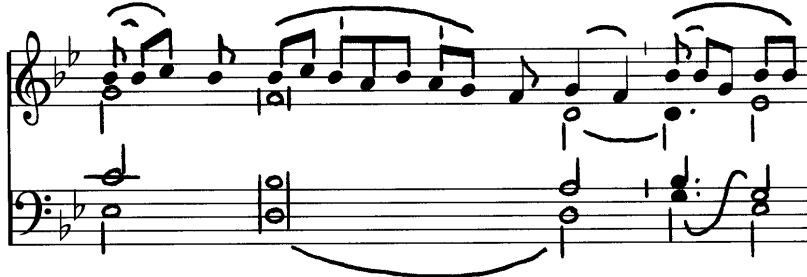
Inveni David servum meum.

Psalm 88 : 21-22 (Vulg.)

8. I have found * Da- vid my ser- vant,



with my ho- ly oil I



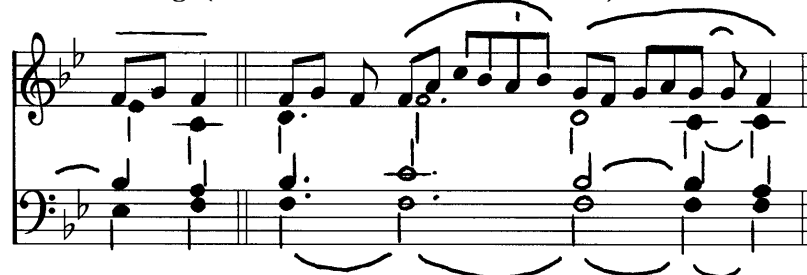
have an-noint-ed him ; for my hand shall help



him, and my arm shall make him



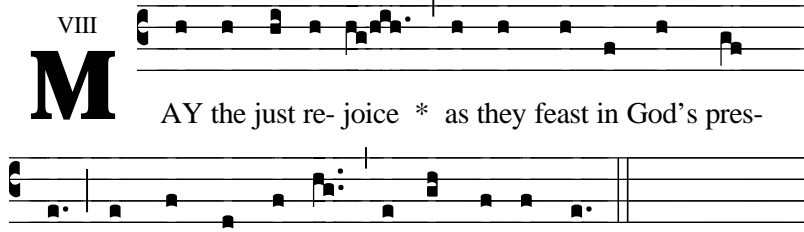
strong. (P. T. Al- le- lu- ia.)



General : Feasts of Saints

Antiphon

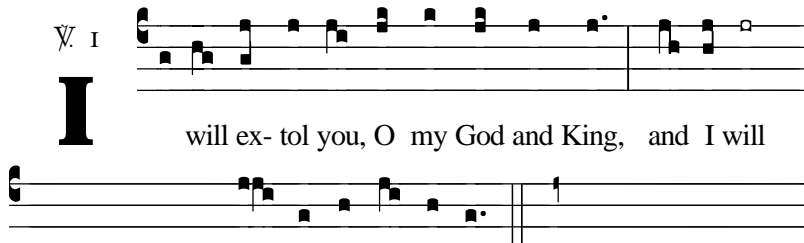
VIII
M



AY the just re- joice * as they feast in God's pres-
ence and take their de-light in gladness of heart.

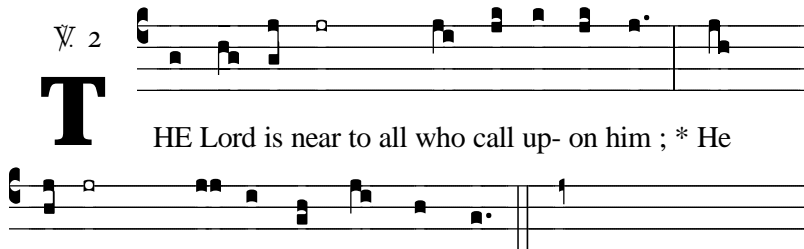
Verses

∞ I
I



will ex- tol you, O my God and King, and I will
bless your name for ev- er and ev- er.

∞ 2
T



HE Lord is near to all who call up- on him ; * He
fulfills the desire of those who fear him.

General : Feasts of Saints

Antiphon

8. May the just re- joice * as they feast in God's

Musical notation for the first line of the antiphon, consisting of a treble clef staff and a bass clef staff. The key signature has two sharps (F# and C#). The melody in the treble staff begins with a quarter note G4, followed by eighth notes A4, B4, C5, and D5, then a quarter note E5, a quarter note D5, and a quarter note C5. The bass staff provides accompaniment with chords and single notes.

pre-sence and take their de- light in glad-ness of

Musical notation for the second line of the antiphon, consisting of a treble clef staff and a bass clef staff. The melody in the treble staff continues with quarter notes D5, E5, F#5, G5, and A5, then a quarter note B5, a quarter note A5, and a quarter note G5. The bass staff continues with accompaniment.

heart.

Musical notation for the third line of the antiphon, consisting of a treble clef staff and a bass clef staff. The treble staff has a whole rest, and the bass staff has a whole note chord. A fermata is placed over the bass staff.

General : Feasts of Saints

Verse 1

8. I will ex- tol you, O my God and King, * and

Musical notation for the first line of Verse 1. It consists of a treble staff and a bass staff. The treble staff contains the melody with lyrics underneath. The bass staff contains the organ accompaniment. The key signature is two sharps (F# and C#) and the time signature is 7/4. The melody begins with a quarter note G4, followed by eighth notes A4, B4, C5, D5, E5, F#5, G5, A5, B5, C6, D6, E6, F#6, G6, A6, B6, C7, D7, E7, F#7, G7, A7, B7, C8, D8, E8, F#8, G8, A8, B8, C9, D9, E9, F#9, G9, A9, B9, C10, D10, E10, F#10, G10, A10, B10, C11, D11, E11, F#11, G11, A11, B11, C12, D12, E12, F#12, G12, A12, B12, C13, D13, E13, F#13, G13, A13, B13, C14, D14, E14, F#14, G14, A14, B14, C15, D15, E15, F#15, G15, A15, B15, C16, D16, E16, F#16, G16, A16, B16, C17, D17, E17, F#17, G17, A17, B17, C18, D18, E18, F#18, G18, A18, B18, C19, D19, E19, F#19, G19, A19, B19, C20, D20, E20, F#20, G20, A20, B20, C21, D21, E21, F#21, G21, A21, B21, C22, D22, E22, F#22, G22, A22, B22, C23, D23, E23, F#23, G23, A23, B23, C24, D24, E24, F#24, G24, A24, B24, C25, D25, E25, F#25, G25, A25, B25, C26, D26, E26, F#26, G26, A26, B26, C27, D27, E27, F#27, G27, A27, B27, C28, D28, E28, F#28, G28, A28, B28, C29, D29, E29, F#29, G29, A29, B29, C30, D30, E30, F#30, G30, A30, B30, C31, D31, E31, F#31, G31, A31, B31, C32, D32, E32, F#32, G32, A32, B32, C33, D33, E33, F#33, G33, A33, B33, C34, D34, E34, F#34, G34, A34, B34, C35, D35, E35, F#35, G35, A35, B35, C36, D36, E36, F#36, G36, A36, B36, C37, D37, E37, F#37, G37, A37, B37, C38, D38, E38, F#38, G38, A38, B38, C39, D39, E39, F#39, G39, A39, B39, C40, D40, E40, F#40, G40, A40, B40, C41, D41, E41, F#41, G41, A41, B41, C42, D42, E42, F#42, G42, A42, B42, C43, D43, E43, F#43, G43, A43, B43, C44, D44, E44, F#44, G44, A44, B44, C45, D45, E45, F#45, G45, A45, B45, C46, D46, E46, F#46, G46, A46, B46, C47, D47, E47, F#47, G47, A47, B47, C48, D48, E48, F#48, G48, A48, B48, C49, D49, E49, F#49, G49, A49, B49, C50, D50, E50, F#50, G50, A50, B50, C51, D51, E51, F#51, G51, A51, B51, C52, D52, E52, F#52, G52, A52, B52, C53, D53, E53, F#53, G53, A53, B53, C54, D54, E54, F#54, G54, A54, B54, C55, D55, E55, F#55, G55, A55, B55, C56, D56, E56, F#56, G56, A56, B56, C57, D57, E57, F#57, G57, A57, B57, C58, D58, E58, F#58, G58, A58, B58, C59, D59, E59, F#59, G59, A59, B59, C60, D60, E60, F#60, G60, A60, B60, C61, D61, E61, F#61, G61, A61, B61, C62, D62, E62, F#62, G62, A62, B62, C63, D63, E63, F#63, G63, A63, B63, C64, D64, E64, F#64, G64, A64, B64, C65, D65, E65, F#65, G65, A65, B65, C66, D66, E66, F#66, G66, A66, B66, C67, D67, E67, F#67, G67, A67, B67, C68, D68, E68, F#68, G68, A68, B68, C69, D69, E69, F#69, G69, A69, B69, C70, D70, E70, F#70, G70, A70, B70, C71, D71, E71, F#71, G71, A71, B71, C72, D72, E72, F#72, G72, A72, B72, C73, D73, E73, F#73, G73, A73, B73, C74, D74, E74, F#74, G74, A74, B74, C75, D75, E75, F#75, G75, A75, B75, C76, D76, E76, F#76, G76, A76, B76, C77, D77, E77, F#77, G77, A77, B77, C78, D78, E78, F#78, G78, A78, B78, C79, D79, E79, F#79, G79, A79, B79, C80, D80, E80, F#80, G80, A80, B80, C81, D81, E81, F#81, G81, A81, B81, C82, D82, E82, F#82, G82, A82, B82, C83, D83, E83, F#83, G83, A83, B83, C84, D84, E84, F#84, G84, A84, B84, C85, D85, E85, F#85, G85, A85, B85, C86, D86, E86, F#86, G86, A86, B86, C87, D87, E87, F#87, G87, A87, B87, C88, D88, E88, F#88, G88, A88, B88, C89, D89, E89, F#89, G89, A89, B89, C90, D90, E90, F#90, G90, A90, B90, C91, D91, E91, F#91, G91, A91, B91, C92, D92, E92, F#92, G92, A92, B92, C93, D93, E93, F#93, G93, A93, B93, C94, D94, E94, F#94, G94, A94, B94, C95, D95, E95, F#95, G95, A95, B95, C96, D96, E96, F#96, G96, A96, B96, C97, D97, E97, F#97, G97, A97, B97, C98, D98, E98, F#98, G98, A98, B98, C99, D99, E99, F#99, G99, A99, B99, C100, D100, E100, F#100, G100, A100, B100, C101, D101, E101, F#101, G101, A101, B101, C102, D102, E102, F#102, G102, A102, B102, C103, D103, E103, F#103, G103, A103, B103, C104, D104, E104, F#104, G104, A104, B104, C105, D105, E105, F#105, G105, A105, B105, C106, D106, E106, F#106, G106, A106, B106, C107, D107, E107, F#107, G107, A107, B107, C108, D108, E108, F#108, G108, A108, B108, C109, D109, E109, F#109, G109, A109, B109, C110, D110, E110, F#110, G110, A110, B110, C111, D111, E111, F#111, G111, A111, B111, C112, D112, E112, F#112, G112, A112, B112, C113, D113, E113, F#113, G113, A113, B113, C114, D114, E114, F#114, G114, A114, B114, C115, D115, E115, F#115, G115, A115, B115, C116, D116, E116, F#116, G116, A116, B116, C117, D117, E117, F#117, G117, A117, B117, C118, D118, E118, F#118, G118, A118, B118, C119, D119, E119, F#119, G119, A119, B119, C120, D120, E120, F#120, G120, A120, B120, C121, D121, E121, F#121, G121, A121, B121, C122, D122, E122, F#122, G122, A122, B122, C123, D123, E123, F#123, G123, A123, B123, C124, D124, E124, F#124, G124, A124, B124, C125, D125, E125, F#125, G125, A125, B125, C126, D126, E126, F#126, G126, A126, B126, C127, D127, E127, F#127, G127, A127, B127, C128, D128, E128, F#128, G128, A128, B128, C129, D129, E129, F#129, G129, A129, B129, C130, D130, E130, F#130, G130, A130, B130, C131, D131, E131, F#131, G131, A131, B131, C132, D132, E132, F#132, G132, A132, B132, C133, D133, E133, F#133, G133, A133, B133, C134, D134, E134, F#134, G134, A134, B134, C135, D135, E135, F#135, G135, A135, B135, C136, D136, E136, F#136, G136, A136, B136, C137, D137, E137, F#137, G137, A137, B137, C138, D138, E138, F#138, G138, A138, B138, C139, D139, E139, F#139, G139, A139, B139, C140, D140, E140, F#140, G140, A140, B140, C141, D141, E141, F#141, G141, A141, B141, C142, D142, E142, F#142, G142, A142, B142, C143, D143, E143, F#143, G143, A143, B143, C144, D144, E144, F#144, G144, A144, B144, C145, D145, E145, F#145, G145, A145, B145, C146, D146, E146, F#146, G146, A146, B146, C147, D147, E147, F#147, G147, A147, B147, C148, D148, E148, F#148, G148, A148, B148, C149, D149, E149, F#149, G149, A149, B149, C150, D150, E150, F#150, G150, A150, B150, C151, D151, E151, F#151, G151, A151, B151, C152, D152, E152, F#152, G152, A152, B152, C153, D153, E153, F#153, G153, A153, B153, C154, D154, E154, F#154, G154, A154, B154, C155, D155, E155, F#155, G155, A155, B155, C156, D156, E156, F#156, G156, A156, B156, C157, D157, E157, F#157, G157, A157, B157, C158, D158, E158, F#158, G158, A158, B158, C159, D159, E159, F#159, G159, A159, B159, C160, D160, E160, F#160, G160, A160, B160, C161, D161, E161, F#161, G161, A161, B161, C162, D162, E162, F#162, G162, A162, B162, C163, D163, E163, F#163, G163, A163, B163, C164, D164, E164, F#164, G164, A164, B164, C165, D165, E165, F#165, G165, A165, B165, C166, D166, E166, F#166, G166, A166, B166, C167, D167, E167, F#167, G167, A167, B167, C168, D168, E168, F#168, G168, A168, B168, C169, D169, E169, F#169, G169, A169, B169, C170, D170, E170, F#170, G170, A170, B170, C171, D171, E171, F#171, G171, A171, B171, C172, D172, E172, F#172, G172, A172, B172, C173, D173, E173, F#173, G173, A173, B173, C174, D174, E174, F#174, G174, A174, B174, C175, D175, E175, F#175, G175, A175, B175, C176, D176, E176, F#176, G176, A176, B176, C177, D177, E177, F#177, G177, A177, B177, C178, D178, E178, F#178, G178, A178, B178, C179, D179, E179, F#179, G179, A179, B179, C180, D180, E180, F#180, G180, A180, B180, C181, D181, E181, F#181, G181, A181, B181, C182, D182, E182, F#182, G182, A182, B182, C183, D183, E183, F#183, G183, A183, B183, C184, D184, E184, F#184, G184, A184, B184, C185, D185, E185, F#185, G185, A185, B185, C186, D186, E186, F#186, G186, A186, B186, C187, D187, E187, F#187, G187, A187, B187, C188, D188, E188, F#188, G188, A188, B188, C189, D189, E189, F#189, G189, A189, B189, C190, D190, E190, F#190, G190, A190, B190, C191, D191, E191, F#191, G191, A191, B191, C192, D192, E192, F#192, G192, A192, B192, C193, D193, E193, F#193, G193, A193, B193, C194, D194, E194, F#194, G194, A194, B194, C195, D195, E195, F#195, G195, A195, B195, C196, D196, E196, F#196, G196, A196, B196, C197, D197, E197, F#197, G197, A197, B197, C198, D198, E198, F#198, G198, A198, B198, C199, D199, E199, F#199, G199, A199, B199, C200, D200, E200, F#200, G200, A200, B200, C201, D201, E201, F#201, G201, A201, B201, C202, D202, E202, F#202, G202, A202, B202, C203, D203, E203, F#203, G203, A203, B203, C204, D204, E204, F#204, G204, A204, B204, C205, D205, E205, F#205, G205, A205, B205, C206, D206, E206, F#206, G206, A206, B206, C207, D207, E207, F#207, G207, A207, B207, C208, D208, E208, F#208, G208, A208, B208, C209, D209, E209, F#209, G209, A209, B209, C210, D210, E210, F#210, G210, A210, B210, C211, D211, E211, F#211, G211, A211, B211, C212, D212, E212, F#212, G212, A212, B212, C213, D213, E213, F#213, G213, A213, B213, C214, D214, E214, F#214, G214, A214, B214, C215, D215, E215, F#215, G215, A215, B215, C216, D216, E216, F#216, G216, A216, B216, C217, D217, E217, F#217, G217, A217, B217, C218, D218, E218, F#218, G218, A218, B218, C219, D219, E219, F#219, G219, A219, B219, C220, D220, E220, F#220, G220, A220, B220, C221, D221, E221, F#221, G221, A221, B221, C222, D222, E222, F#222, G222, A222, B222, C223, D223, E223, F#223, G223, A223, B223, C224, D224, E224, F#224, G224, A224, B224, C225, D225, E225, F#225, G225, A225, B225, C226, D226, E226, F#226, G226, A226, B226, C227, D227, E227, F#227, G227, A227, B227, C228, D228, E228, F#228, G228, A228, B228, C229, D229, E229, F#229, G229, A229, B229, C230, D230, E230, F#230, G230, A230, B230, C231, D231, E231, F#231, G231, A231, B231, C232, D232, E232, F#232, G232, A232, B232, C233, D233, E233, F#233, G233, A233, B233, C234, D234, E234, F#234, G234, A234, B234, C235, D235, E235, F#235, G235, A235, B235, C236, D236, E236, F#236, G236, A236, B236, C237, D237, E237, F#237, G237, A237, B237, C238, D238, E238, F#238, G238, A238, B238, C239, D239, E239, F#239, G239, A239, B239, C240, D240, E240, F#240, G240, A240, B240, C241, D241, E241, F#241, G241, A241, B241, C242, D242, E242, F#242, G242, A242, B242, C243, D243, E243, F#243, G243, A243, B243, C244, D244, E244, F#244, G244, A244, B244, C245, D245, E245, F#245, G245, A245, B245, C246, D246, E246, F#246, G246, A246, B246, C247, D247, E247, F#247, G247, A247, B247, C248, D248, E248, F#248, G248, A248, B248, C249, D249, E249, F#249, G249, A249, B249, C250, D250, E250, F#250, G250, A250, B250, C251, D251, E251, F#251, G251, A251, B251, C252, D252, E252, F#252, G252, A252, B252, C253, D253, E253, F#253, G253, A253, B253, C254, D254, E254, F#254, G254, A254, B254, C255, D255, E255, F#255, G255, A255, B255, C256, D256, E256, F#256, G256, A256, B256, C257, D257, E257, F#257, G257, A257, B257, C258, D258, E258, F#258, G258, A258, B258, C259, D259, E259, F#259, G259, A259, B259, C260, D260, E260, F#260, G260, A260, B260, C261, D261, E261, F#261, G261, A261, B261, C262, D262, E262, F#262, G262, A262, B262, C263, D263, E263, F#263, G263, A263, B263, C264, D264, E264, F#264, G264, A264, B264, C265, D265, E265, F#265, G265, A265, B265, C266, D266, E266, F#266, G266, A266, B266, C267, D267, E267, F#267, G267, A267, B267, C268, D268, E268, F#268, G268, A268, B268, C269, D269, E269, F#269, G269, A269, B269, C270, D270, E270, F#270, G270, A270, B270, C271, D271, E271, F#271, G271, A271, B271, C272, D272, E272, F#272, G272, A272, B272, C273, D273, E273, F#273, G273, A273, B273, C274, D274, E274, F#274, G274, A274, B274, C275, D275, E275, F#275, G275, A275, B275, C276, D276, E276, F#276, G276, A276, B276, C277, D277, E277, F#277, G277, A277, B277, C278, D278, E278, F#278, G278, A278, B278, C279, D279, E279, F#279, G279, A279, B279, C280, D280, E280, F#280, G280, A280, B280, C281, D281, E281, F#281, G281, A281, B281, C282, D282, E282, F#282, G282, A282, B282, C283, D283, E283, F#283, G283, A283, B283, C284, D284, E284, F#284, G284, A284, B284, C285, D285, E285, F#285, G285, A285, B285, C286, D286, E286, F#286, G286, A286, B286, C287, D287, E287, F#287, G287, A287, B287, C288, D288, E288, F#288, G288, A288, B288, C289, D289, E289, F#289, G289, A289, B289, C290, D290, E290, F#290, G290, A290, B290, C291, D291, E291, F#291, G291, A291, B291, C292, D292, E292, F#292, G292, A292, B292, C293, D293, E293, F#293, G293, A293, B293, C294, D294, E294, F#294, G294, A294, B294, C295, D295, E295, F#295, G295, A295, B295, C296, D296, E296, F#296, G296, A296, B296, C297, D297, E297, F#297, G297, A297, B297, C298, D298, E298, F#298, G298, A298, B298, C299, D299, E299, F#299, G299, A299, B299, C300, D300, E300, F#300, G300, A300, B300, C301, D301, E301, F#301, G301, A301, B301, C302, D302, E302, F#302, G302, A302, B302, C303, D303, E303, F#303, G303, A303, B303, C304, D304, E304, F#304, G304, A304, B304, C305, D305, E305, F#305, G305, A305, B305, C306, D306, E306, F#306, G306, A306, B306, C307, D307, E307, F#307, G307, A307, B307, C308, D308, E308, F#308, G308, A308, B308, C309, D309, E309, F#309, G309, A309, B309, C310, D310, E310, F#310, G310, A310, B310, C311, D311, E311, F#311, G311, A311, B311, C312, D312, E312, F#312, G312, A312, B312, C313, D313, E313, F#313, G313, A313, B313, C314, D314, E314, F#314, G314, A314, B314, C315, D315, E315, F#315, G315, A315, B315, C316, D316, E316, F#316, G316, A316, B316, C317, D317, E317, F#317, G317, A317, B317, C318, D318, E318, F#318, G318, A318, B318, C319, D319, E319, F#319, G319, A319, B319, C320, D320, E320, F#320, G320, A320, B320, C321, D321, E321, F#321, G321, A321, B321, C322, D322, E322, F#322, G322, A322, B322, C323, D323, E323, F#323, G323, A323, B323, C324, D324, E324, F#324, G324, A324, B324, C325, D325, E325, F#325, G325, A325, B325, C326, D326, E326, F#326, G326, A326, B326, C327, D327, E327, F#327, G327, A327, B327, C328, D328, E328, F#328, G328, A328, B328, C329, D329, E329, F#329, G329, A329, B329, C330, D330, E330, F#330, G330, A330, B330, C331, D331, E331, F#331, G331, A331, B331, C332, D332, E332, F#332, G332, A332, B332, C333, D333, E333, F#333, G333, A333, B333, C334, D334, E334, F#334, G334, A334, B334, C335, D335, E335, F#335, G335, A335, B335, C336, D336, E336, F#336, G336, A336, B336, C337, D337, E337, F#337, G337, A337, B337, C338, D338, E338, F#338, G338, A338, B338, C339, D339, E339, F#339, G339, A339, B339, C340, D340, E340, F#340, G340, A340, B340, C341, D341, E341, F#341, G341, A341, B341, C342, D342, E342, F#342, G342, A342, B342, C343, D343, E343, F#343, G343, A343, B343, C344, D344, E344, F#344, G344, A344, B344, C345, D345, E345, F#345, G345, A345, B345, C346, D346, E346, F#346, G346, A346, B346, C347, D347, E347, F#347, G347, A347, B347, C348, D348, E348, F#348, G348, A348, B348, C349, D349, E349, F#349, G349, A349, B349, C350, D350, E350, F#350, G350, A350, B350, C351, D351, E351, F#351, G351, A351, B351, C352, D352, E352, F#352, G352, A352, B352, C353, D353, E353, F#353, G353, A353, B353, C354, D354, E354, F#354, G354, A354, B354, C355, D355, E355, F#355, G355, A355, B355, C356, D356, E356, F#356, G356, A356, B356, C357, D357, E357, F#357, G357, A357, B357, C358, D358, E358, F#358, G358, A358, B358, C359, D359, E359, F#359, G359, A359, B359, C360, D360, E360, F#360, G360

General : Feasts of Saints

Antiphon

W^I Ho-ev-er wish-es to come af- ter me, * let him de-ny
him-self, and take up his cross, and fol-low me.

I^{∞ I} will ex-tol you, O my God and King, and I will
bless your name for ev- er and ev- er.

T^{∞ 2} HE Lord is near to all who call up- on him ; * He
ful-fills the de-sire of all those who fear him.

General : Feasts of Saints

Antiphon

Qui vult venire post me.

1. Who-ev- er wish- es to come af- ter me, * let him

Musical notation for the first line of the antiphon. It consists of a treble clef staff and a bass clef staff. The treble staff contains a melody of eighth and quarter notes, with a fermata over the final note. The bass staff provides a harmonic accompaniment with chords and moving lines.

de- ny him-self, and take up his cross, and fol- low me.

Musical notation for the second line of the antiphon. It consists of a treble clef staff and a bass clef staff. The treble staff continues the melody from the first line, ending with a double bar line. The bass staff continues the harmonic accompaniment.

General : Feasts of Saints

Verse 1

1. I will ex-tol you, O my God and King, * and I

The first line of music for Verse 1 consists of two staves. The upper staff is a vocal line in G major, 4/4 time, starting with a treble clef and a key signature of one flat. The melody begins with a quarter note G4, followed by eighth notes A4, B4, C5, and D5. The lower staff is a piano accompaniment line in bass clef, starting with a bass clef and a key signature of one flat. It features a 7-measure rest followed by a series of chords and notes that support the vocal line.

will bless your name for ev- er and ev- er.

The second line of music for Verse 1 continues the vocal and piano parts. The vocal line features a melisma on the word 'ever', with a long horizontal line and a fermata over the final note. The piano accompaniment provides harmonic support with sustained chords and moving bass lines.

Verse 2

1. The Lord is near to all who call up-on him ; *

The first line of music for Verse 2 consists of two staves. The upper staff is a vocal line in G major, 4/4 time, starting with a treble clef and a key signature of one flat. The melody begins with a quarter note G4, followed by eighth notes A4, B4, C5, and D5. The lower staff is a piano accompaniment line in bass clef, starting with a bass clef and a key signature of one flat. It features a 7-measure rest followed by a series of chords and notes that support the vocal line.

He ful- fils the de- sire of all those who fear him.

The second line of music for Verse 2 continues the vocal and piano parts. The vocal line features a melisma on the word 'fear', with a long horizontal line and a fermata over the final note. The piano accompaniment provides harmonic support with sustained chords and moving bass lines.