

25 April

SAINT MARK, Evangelist

'Proper' of the Mass

Set to Gregorian Psalm-tones
With Organ Accompaniment

by

Samuel F. Weber, O.S.B.



2007

Acknowledgements

The English translation of the Psalm responses, the Gospel Acclamation verses, from *The Lectionary for Mass* © 1968, 1981, 1997, ICEL ; the English translation of the Entrance and Communion Antiphons from *The Roman Missal* © 1973 ICEL, Washington, D.C. All rights reserved.

Translations of the Psalms based on *The Book of Psalms* © 1950 and 1995 by the Confraternity of Christian Doctrine, Washington, D.C.

Translation of the Offertory Verse based from the *Roman Missal*, 1964.

Harmonizations of Latin Psalm tones adapted by the editor from the settings of Carlo Rossini in his classic work '*Proper*' of the *Mass for the Entire Liturgical Year*, 1933 ff., and from the various harmonizations of Achille Bragers.

English tones and harmonizations by Samuel F. Weber, O.S.B.

Musical settings and compilation © 2007 Saint Meinrad Archabbey, St. Meinrad, IN 47577 U.S.A. All rights reserved.

On the cover : MEDIEVAL CHOIR, Anonymous woodcut from *Der Spiegel des Menschlichen lebens*. Augsburg, 1479.

Contact the editor :

Rev. Samuel F. Weber, O.S.B.
Wake Forest University
The Divinity School
Box 7719
Winston-Salem, NC 27109-7719 U.S.A.
TEL 336.758.4289
EMAIL webersf@wfu.edu

One copy of this project is made available to interested parties for educational purposes only, on a not-for-profit, not for publication basis, for private distribution only. It is hoped that this project will result in a permanent resource once the expected English translation of the *Missale Romanum* (2003) is promulgated.

25 April

SAINT MARK, Evangelist

Mk 16:15

INTROIT

7. Go out to the whole world, * and preach the Gos-pel

to all cre-a-tion, al-le-lu-ia, al-le-lu-ia.

VERSE

O praise the Lord, all you na-tions; * glo-ri-fy

him, all you peo-ples! Ant. Go out.

Offeratory

8. The heav-ens pro-claim * your won-ders, O Lord,

Handwritten musical notation for the first system. The treble staff contains a melody in D major (two sharps) with lyrics "The heav-ens pro-claim * your won-ders, O Lord,". The bass staff provides accompaniment with block chords and some melodic lines. The time signature is 4/4.

and your faith-ful-ness in the assembly of the

Handwritten musical notation for the second system. The treble staff continues the melody with lyrics "and your faith-ful-ness in the assembly of the". The bass staff continues the accompaniment. The time signature is 4/4.

ho-ly ones, al-le-lu-ia, al-le-lu-ia.

Handwritten musical notation for the third system. The treble staff contains the melody for "ho-ly ones, al-le-lu-ia, al-le-lu-ia." with a double bar line at the end. The bass staff provides accompaniment. The time signature is 4/4.

offertory: Verse

8. The favors of the Lord I will sing for-ev-er; *

Handwritten musical notation for the first system of the offertory verse. It consists of two staves: a treble clef staff and a bass clef staff. The key signature is two sharps (F# and C#). The treble staff contains a melody of eighth notes with a slur over the final two notes. The bass staff contains a harmonic accompaniment with a slur over the first two notes. The music concludes with a double bar line.

through all gen-er-a-tions my mouth shall proclaim

Handwritten musical notation for the second system of the offertory verse. It consists of two staves: a treble clef staff and a bass clef staff. The key signature is two sharps (F# and C#). The treble staff contains a melody of eighth notes with a slur over the final two notes. The bass staff contains a harmonic accompaniment with a slur over the final two notes. The music concludes with a double bar line.

your faith-ful-ness .

Handwritten musical notation for the third system of the offertory verse. It consists of two staves: a treble clef staff and a bass clef staff. The key signature is two sharps (F# and C#). The treble staff contains a melody of eighth notes with a double bar line at the end. The bass staff contains a harmonic accompaniment with a slur over the first two notes and a double bar line at the end.

Chant melodies and organ harmonies arranged after traditional sources by Samuel F. Weber, O.S.B. © 2005
Saint Meinrad Archabbey, St. Meinrad, IN 47577-1010 U.S.A. All rights reserved. EMAIL : webersf@wfu.edu

25 April
ST. Mark, Evangelist

COMMUNION

MT 28:30

8. I, the Lord, * am with you al-ways,

Handwritten musical notation for the first line of the Communion text. It consists of two staves: a treble clef staff and a bass clef staff. The key signature has two sharps (F# and C#). The melody is written in the treble staff with notes and rests, and the bass line is in the bass staff with notes and rests. The lyrics "I, the Lord, * am with you al-ways," are written above the treble staff.

un-til the end of the world, al-le-lu-ia, al-le-

Handwritten musical notation for the second line of the Communion text. It consists of two staves: a treble clef staff and a bass clef staff. The key signature has two sharps (F# and C#). The melody continues in the treble staff, and the bass line continues in the bass staff. The lyrics "un-til the end of the world, al-le-lu-ia, al-le-" are written above the treble staff.

lu-ia.

Handwritten musical notation for the third line of the Communion text. It consists of two staves: a treble clef staff and a bass clef staff. The key signature has two sharps (F# and C#). The melody concludes in the treble staff with a double bar line, and the bass line concludes in the bass staff with a double bar line. The lyrics "lu-ia." are written above the treble staff.

COMMUNION VERSE

8. The Lord is near to all who call up-on him, *

He ~~is near~~ fulfills the de-sires of those who fear him.

25 April. Saint Mark, Evangelist

Introit

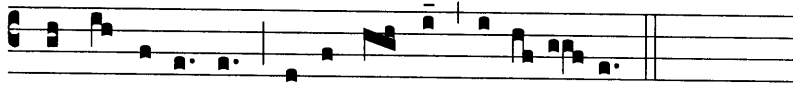
Euntes in mundum universum.

Mk 16 : 15

Intr.
7

G

O out to the whole world, * and preach the Gos-pel



to all cre-a-tion, al-le-lu-ia, al-le-lu-ia.

Verse

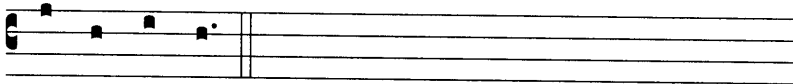
Laudate Dominum, omnes gentes.

Psalms 116 : 1

Verse
7

O

praise the Lord, all you na-tions ; * glo-ri-fy him,



all you peo-ples.

Offertory

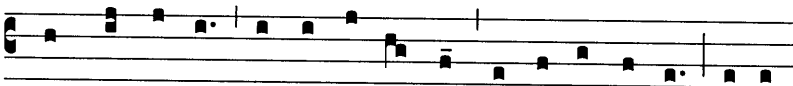
Confitebuntur caeli.

Psalms 88 : 6

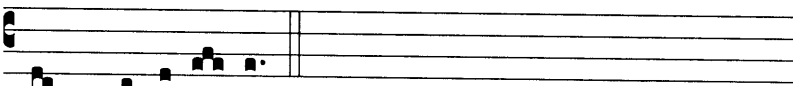
Intr.
8

T

HE heavens proclaim * your won-ders, O Lord, and



your faithfulness in the as-sem-bly of the ho-ly ones, al-le-



lu-ia, al-le-lu-ia.

Verse

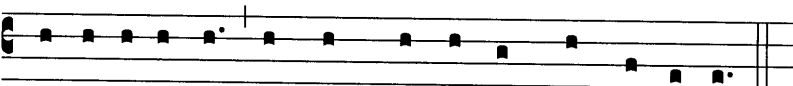
Misericordias Domini.

Psalms 88 : 2

Verse
8

T

HE fa-vors of the Lord I will sing for-ev-er ; * through



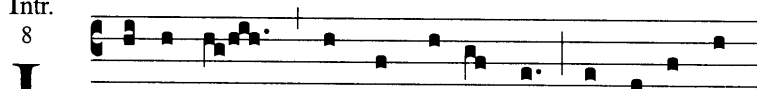
all gen-er- a-tions my mouth shall proclaim your faithfulness.

Communion

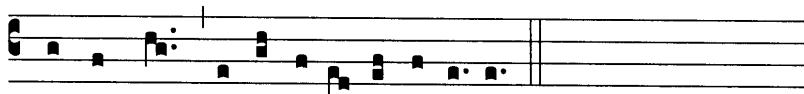
Ecce ego vobiscum sum.

Mt 28 : 30

Intr.
8



I, the Lord, * am with you al-ways, un-til the end



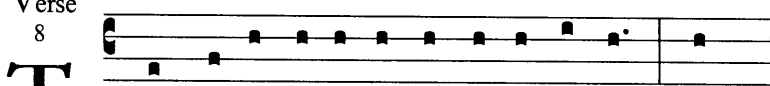
of the world, al-le-lu-ia, al-le-lu-ia.

Verse

Prope est Dominus.

Psalms 144 : 18. 19

Verse
8



THE Lord is near to all who call up-on him, * he



ful-fills the de-sires of those who fear him.