

INTROIT

Psalm 27 : 7. 9 & 1

Intr.

II

T

HE Lord * is the strength of His peo- ple, and

the pro-tec-tor of the sal-va-tion of His a-noint-ed : save, O Lord,

thy peo-ple, and bless Thine in-her- i-tance, and rule them for-

ev- er. *Ps.* Un- to Thee will I cry, O Lord : O my God, be

not Thou si- lent to me, * lest if Thou be si- lent to me, I

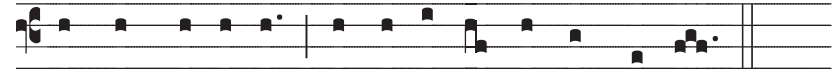
become like them that go down in- to the pit.

Chant settings by Fr. Samuel F. Weber, O.S.B., © 2009 Saint Meinrad Archabbey, St. Meinrad, IN 47577-1010 U.S.A., All rights reserved. Used with permission. Institute of Sacred Music, Archdiocese of Saint Louis, 5200 Glennon Drive, St. Louis, MO 63119-4330 weber@kenrick.edu

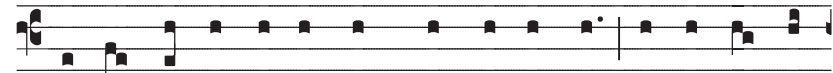
Optional Verses



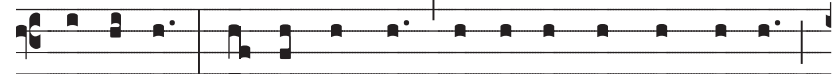
2. My heart hath said to thee : My face hath sought thee. * Thy face



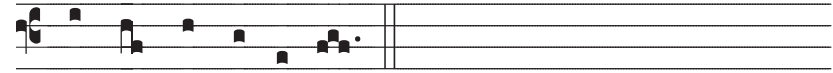
O Lord, will I seek. Turn not a- way thy face from me.



3. I be- lieve to see the good things of the Lord in the land of

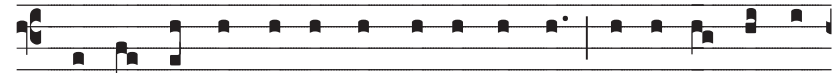


the liv- ing. * Ex-pect the Lord : and let thy heart take courage :

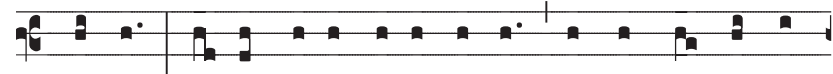


and wait thou for the Lord.

Gloria Patri



Glo- ry be to the Fa-ther, and to the Son, and to the Ho- ly



Spir- it. * As it was in the be- ginning, is now, and ev- er



shall be, world with- out end. A- men.

Chant settings by Fr. Samuel F. Weber, O.S.B., © 2009 Saint Meinrad Archabbey, St. Meinrad, IN 47577-1010 U.S.A., All rights reserved. Used with permission. Institute of Sacred Music, Archdiocese of Saint Louis, 5200 Glennon Drive, St. Louis, MO 63119-4330 weber@kenrick.edu

Sunday 12 "Per annum"

OFFERTORY

Offert.
IV

P

Er-fect thou * my go-ings in thy paths, that my foot-

steps be not moved : in-cline thine ear ; and hear my words :

show forth thy won-der-ful mer-cies ; thou who sav-est them

that trust in thee.

Chant settings by Fr. Samuel F. Weber, O.S.B., © 2009 Saint Meinrad Archabbey, St. Meinrad, IN 47577-1010 U.S.A., All rights reserved. Used with permission. Institute of Sacred Music, Archdiocese of Saint Louis, 5200 Glennon Drive, St. Louis, MO 63119-4330 weber@kenrick.edu

Sunday 12 "Per annum"

Verse

Verse
VI

F

From them that re-sist thy right hand keep me, as the

ap-ple of thine eye. * Protect me un-der the shad-ow of thy wings.

Chant settings by Fr. Samuel F. Weber, O.S.B., © 2009 Saint Meinrad Archabbey, St. Meinrad, IN 47577-1010 U.S.A., All rights reserved. Used with permission. Institute of Sacred Music, Archdiocese of Saint Louis, 5200 Glennon Drive, St. Louis, MO 63119-4330 weber@kenrick.edu

Sunday 12 "Per annum"

COMMUNION

Comm.
VI

I

will go round, * and of-fer up in his tab-er-

na- cle a sac-ri-fice of ju- bi- la- tion ; I will sing,

and re- cite a psalm to the Lord.

Chant settings by Fr. Samuel F. Weber, O.S.B., © 2009 Saint Meinrad Archabbey, St. Meinrad, IN 47577-1010 U.S.A., All rights reserved. Used with permission. Institute of Sacred Music, Archdiocese of Saint Louis, 5200 Glennon Drive, St. Louis, MO 63119-4330 weber@kenrick.edu

Sunday 12 "Per annum"

Verse

Verse
VI

H

Ear, O Lord, my voice, with which I have cried to

thee. * My heart hath said to thee : thy face, O Lord, will I seek.

Chant settings by Fr. Samuel F. Weber, O.S.B., © 2009 Saint Meinrad Archabbey, St. Meinrad, IN 47577-1010 U.S.A., All rights reserved. Used with permission. Institute of Sacred Music, Archdiocese of Saint Louis, 5200 Glennon Drive, St. Louis, MO 63119-4330 weber@kenrick.edu