

I January
THE OCTAVE DAY OF CHRISTMAS
SOLEMNITY OF MARY,
THE MOTHER OF GOD

'Proper' of the Mass

Set to Gregorian Psalm-tones
With Organ Accompaniment

by

Samuel F. Weber, O.S.B.



2006

The 'Proper' of the Mass
for Sundays and Solemnities of the Liturgical Year
commissioned by
Prince of Peace Catholic Church,
Taylors, SC.

2006

Acknowledgements

The English translation of the Psalm responses, the Gospel Acclamation verses, from *The Lectionary for Mass* © 1968, 1981, 1997, ICEL ; the English translation of the Entrance and Communion Antiphons from *The Roman Missal* © 1973 ICEL, Washington, D.C. All rights reserved.

Translations of the Offertory Verse and Psalms for the Introit and Communion prepared by the editor to accord with the requirements of *Liturgiam Authenticam*. These translations are based on the *Douai-Reims version*, as well as *The Book of Psalms* © 1950 and 1995 by the Confraternity of Christian Doctrine, Washington, D.C., and *The Revised Standard Version*, An Ecumenical Edition © 1973 by Division of Christian Education of the National Council of Churches of Christ in the United States of America.

Harmonizations of Latin Psalm tones adapted by the editor from the settings of Carlo Rossini in his classic work '*Proper*' of the Mass for the Entire Liturgical Year, 1933 ff., and from the various harmonizations of Achille Bragers.

English tones and harmonizations by Samuel F. Weber, O.S.B.

Musical settings and compilation © 2005 Saint Meinrad Archabbey, St. Meinrad, IN 47577 U.S.A. All rights reserved.

On the cover : MEDIEVAL CHOIR, Anonymous woodcut from *Der Spiegel des Menschlichen lebens*. Augsburg, 1479.

Contact the editor :

Rev. Samuel F. Weber, O.S.B.
Wake Forest University
The Divinity School
Box 7719
Winston-Salem, NC 27109-7719 U.S.A.
TEL 336.758.4289
EMAIL webersf@wfu.edu

One copy of this project is made available to interested parties for educational purposes only, on a not-for-profit, not for publication basis, for private distribution only. It is hoped that this project will result in a permanent resource once the expected English translation of the *Missale Romanum* (2003) is promulgated.

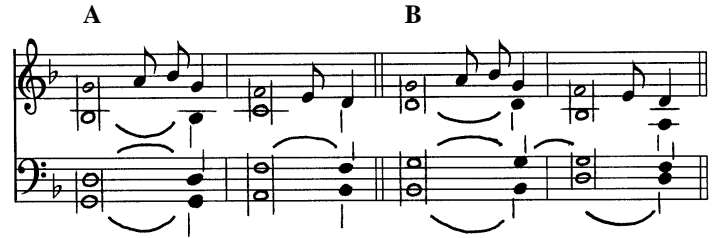
I January

THE OCTAVE DAY OF CHRISTMAS SOLEMNITY OF MARY, THE MOTHER OF GOD

Tone 6 F



Tone 7 d



INTROIT

1. Hail, holy Mother ! /
The child to whom *you gave birth* *
is the King of heaven and earth *for ever*.
2. My heart overflows with a *goodly theme* ; *
as I sing to the king the song I *have made*.
3. Glory be to the Father, and *to the Son*, *
and to the Holy **Spirit**.
4. As it was in the beginning, †
is now and *ever shall be*, *
world without end. **Amen**.

Repetition of the Introit Antiphon : *

Hail, holy Mother ! | the child to whom you gave birth |
is the King of heaven and earth for *ev-er*.

Or :

1. A light will shine on *us this day*, *
the Lord is born *for us* ;
2. he shall be called Wonderful God, Prince of peace, /
Father of the *world to come* ; *
and his kingship will *never end*.
- B** 3. The Lord is king, in *splendor robed* ; *
robed is the Lord and girt about *with strength*.
4. Glory be to the Father, and *to the Son*, *
and to the Holy **Spirit**.
5. As it was in the beginning, †
is now and *ever shall be*, *
world without end. **Amen**.

Repetition of the Introit Antiphon : *

A light will shine on us this day, | the Lord is born for us ; |
he shall be called Wonderful God, Prince of peace, |
Father of the world to come ; | and his kingship will *nev-er* end.

OFFERTORY

1. Blessed are you, O holy *Virgin Mary*, *
and worthy of *all praise*,
2. because from you came forth the *sun of righteousness*, *
Christ *our God*.

COMMUNION

- B** Jesus Christ *is the same* *
yesterday, today, and *for ever*.

(*)
*Organ accomp.
for the repetition
of the Introit.*



COMMON OF THE BLESSED VIRGIN MARY

Introit

Salve, sancta Parens.

Sedulius

Antiphon :

2. Hail, ho- ly Moth- er, * who gave birth

Musical notation for the first line of the antiphon, featuring a treble and bass staff in G major. The melody is written in a style suitable for voice or organ. The lyrics "Hail, ho- ly Moth- er, * who gave birth" are placed above the notes.

to the King, who rules heav- en and earth

Musical notation for the second line of the antiphon, continuing the melody from the first line. The lyrics "to the King, who rules heav- en and earth" are placed above the notes.

for- ev- er and ev- er.

Musical notation for the third line of the antiphon, concluding the phrase "for- ev- er and ev- er." with a double bar line. The lyrics "for- ev- er and ev- er." are placed above the notes.

(P. T.) Al- le- lu- ia, al- le- lu- ia.

Musical notation for the Gloria, featuring a treble and bass staff in G major. The melody is written in a style suitable for voice or organ. The lyrics "(P. T.) Al- le- lu- ia, al- le- lu- ia." are placed above the notes.

I January: Solemnity of Mary, the Mother of God

Psalm Verse

Eructavit cor meum.

Ps 44 : 2

2. My heart o- ver- flows with a good- ly theme ; *

Musical notation for the first line of the psalm verse. It consists of two staves: a treble clef staff and a bass clef staff. The key signature has two sharps (F# and C#). The melody is written in the treble staff, and the organ accompaniment is in the bass staff. The melody begins with a quarter rest, followed by a series of eighth and quarter notes.

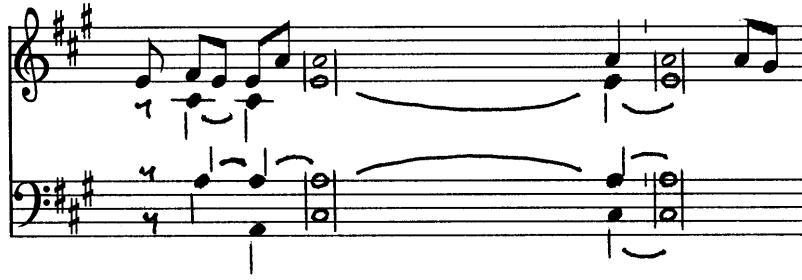
as I sing to the king the song that I have made.

Musical notation for the second line of the psalm verse. It consists of two staves: a treble clef staff and a bass clef staff. The key signature has two sharps (F# and C#). The melody continues in the treble staff, and the organ accompaniment continues in the bass staff. The melody ends with a quarter note.

I January: Solemnity of Mary, the Mother of God

Gloria Patri :

2. Glo- ry be to the Father, and to the Son, and to the



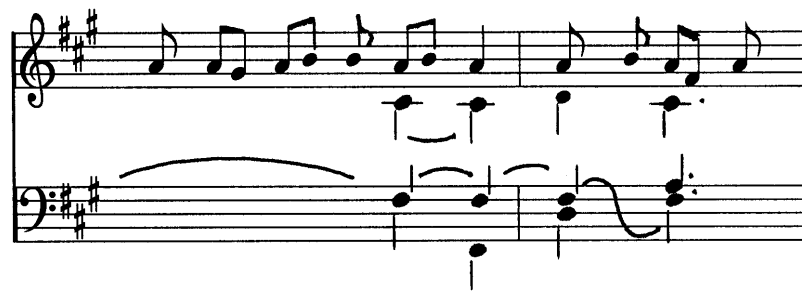
Musical notation for the first line of the Gloria Patri. It consists of a treble staff and a bass staff in the key of D major (two sharps). The melody is written in a simple, homophonic style. The lyrics are: "2. Glo- ry be to the Father, and to the Son, and to the".

Ho- ly Spir- it. * As it was in the beginning, is



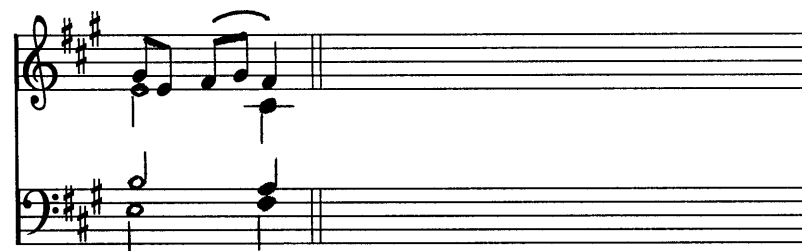
Musical notation for the second line of the Gloria Patri. It consists of a treble staff and a bass staff in the key of D major. The melody continues from the previous line. The lyrics are: "Ho- ly Spir- it. * As it was in the beginning, is".

now, and ev- er shall be, world with-out end.



Musical notation for the third line of the Gloria Patri. It consists of a treble staff and a bass staff in the key of D major. The melody concludes with a final cadence. The lyrics are: "now, and ev- er shall be, world with-out end."

A- men.



Musical notation for the final line of the Gloria Patri. It consists of a treble staff and a bass staff in the key of D major. The melody is a simple, homophonic setting of the word "Amen".

I January: Solemnity of Mary, the Mother of God

INTROIT

Psalm Verses : Psalm 121, Mode 2



1. I was glad when they *said to me*, *
“Let us go up to the **Lord’s** house.”
2. And now we *have set foot*, *
within your gates, O **Jerusalem**. (R.)

3. **Jerusalem**, built *as a city* *
with compact **unity**.
4. To it the *tribes go up*, *
the tribes of the **Lord**, (R.)

5. According to the *decree for Israel*, *
to give thanks to the name of the **Lord**. (R.)
6. In it are *set up judgement seats*, *
seats for the house of **David**. (R.)

7. Pray for the peace *of Jerusalem* ! *
May those who love you **prosper** !
8. May peace be *within your walls*, *
prosperity in your **buildings**. (R.)

9. Because of my *relatives and friends* *
I will say, “Peace be **within** you.”
10. Because of the house of the *Lord, our God*, *
I will pray for your **good**. (R.)

Introit

Metrical Psalm.

Tune : SAINT COLUMBA (C.M.)

Ps 121

PRAY that Jerusalem may have
Peace and felicity.
Let them that love thee and thy peace
Have still prosperity.

Therefore I will that peace may still
Within thy walls remain,
And ever may thy palaces
Prosperity retain.

Now, for my friends' and brethren's sake
' Peace be in thee, ' I'll say,
And, for the house of God our Lord,
I'll seek thy good alway.

All glory to the Father be,
And to his only Son ;
All praise unto the Comforter,
The Godhead, Three in One. Amen.

Scottish Metrical Psalter (1650)

I January: Solemnity of May, the Mother of God

SUGGESTED OFFERTORY

1. Hail Mar- y, * full of grace, the Lord is with you; bless-ed are you a- mong wo- men, al- le- lu- ia.

Musical score for the first verse of the offertory. It consists of two staves: a vocal line in the upper staff and an organ accompaniment in the lower staff. The key signature has one flat (B-flat), and the time signature is 4/4. The music is written in a simple, homophonic style with clear phrasing.

Text from the *Roman Missal*, 1964. Melody by Columba Kelly, O.S.B. Harmonization by Samuel F. Weber, O.S.B.

Verse 1

1. How shall this be done since I know not man? * The Holy Spirit will come upon you and the power of the Most

Musical score for the first verse of the offertory. It consists of two staves: a vocal line in the upper staff and an organ accompaniment in the lower staff. The key signature has one flat (B-flat), and the time signature is 4/4. The music is written in a simple, homophonic style with clear phrasing.

High will o- ver- shad- ow you. * Bless-ed.

Musical score for the first verse of the offertory. It consists of two staves: a vocal line in the upper staff and an organ accompaniment in the lower staff. The key signature has one flat (B-flat), and the time signature is 4/4. The music is written in a simple, homophonic style with clear phrasing.

Verse 2

There- fore, the child to be born of you will be called ho- ly * the Son of God. *Ant.* Hail Mar- y.

Musical score for the first verse of the offertory. It consists of two staves: a vocal line in the upper staff and an organ accompaniment in the lower staff. The key signature has one flat (B-flat), and the time signature is 4/4. The music is written in a simple, homophonic style with clear phrasing.

Chant melodies and organ harmonies arranged after traditional sources by Samuel F. Weber, O.S.B. © 2005
Saint Meinrad Archabbey, St. Meinrad, IN 47577-1010 U.S.A. All rights reserved. EMAIL: webersf@wfu.edu

Due to a lack of time, the Propers are incomplete for the Year 2006.

More settings will be provided for 2007.