

**THE NATIVITY
OF OUR LORD :
MASS AT MIDNIGHT**

'Proper' of the Mass

**Set to Gregorian Tones
With Organ Accompaniment**

by

Samuel F. Weber, O.S.B.



2005

The 'Proper' of the Mass
for Sundays and Solemnities of the Liturgical Year
commissioned by
Prince of Peace Catholic Church,
Taylors, SC.

2005

Acknowledgements

The English translation of the Psalm responses, the Gospel Acclamation verses, from *The Lectionary for Mass* © 1968, 1981, 1997, ICEL ; the English translation of the Entrance and Communion Antiphons from *The Roman Missal* © 1973 ICEL, Washington, D.C. All rights reserved.

Translations of the Offertory Verse and Psalms for the Introit and Communion prepared by the editor to accord with the requirements of *Liturgiam Authenticam*. These translations are based on the *Douai-Reims version*, as well as *The Book of Psalms* © 1950 and 1995 by the Confraternity of Christian Doctrine, Washington, D.C., and *The Revised Standard Version, An Ecumenical Edition* © 1973 by Division of Christian Education of the National Council of Churches of Christ in the United States of America.

Harmonizations of Latin Psalm tones adapted by the editor from the settings of Carlo Rossini in his classic work '*Proper*' of the Mass for the Entire Liturgical Year, 1933 ff., and from the various harmonizations of Achille Bragers.

English tones and harmonizations by Samuel F. Weber, O.S.B.

Musical settings and compilation © 2005 Saint Meinrad Archabbey, St. Meinrad, IN 47577 U.S.A. All rights reserved.

On the cover : MEDIEVAL CHOIR, Anonymous woodcut from *Der Spiegel des Menschlichen lebens*. Augsburg, 1479.

Contact the editor :

Rev. Samuel F. Weber, O.S.B.
Wake Forest University
The Divinity School
Box 7719
Winston-Salem, NC 27109-7719 U.S.A.
TEL 336.758.4289
EMAIL webersf@wfu.edu

One copy of this project is made available to interested parties for educational purposes only, on a not-for-profit, not for publication basis, for private distribution only. It is hoped that this project will result in a permanent resource once the expected English translation of the *Missale Romanum* (2003) is promulgated.

THE NATIVITY OF OUR LORD : MASS AT MIDNIGHT

Tone 6



INTROIT

1. The Lord said to me : / *You are my Son* ; *
this day have I begotten **you**.
2. Why this tumult *among nations*, *
among peoples this useless **murmuring** ?
3. Glory be to the Father, and *to the Son*, *
and to the **Holy Spirit**.
4. As it was in the beginning, /
is now and **ever shall** be, *
world without end. **Amen**.

*Repetition of the Introit Antiphon : **

The Lord said to me : | you are my Son ; |
this day have I be- | gotten you.

Or : INTROIT

1. Let us rejoice in the Lord, / for our Savior is born *to the world* *
True peace has descended *from heaven*.
2. Justice shall flower *in his days*, *
and profound peace, / till the moon be **no more**. (R.)
3. Glory be to the Father, and *to the Son*, *
and to the **Holy Spirit**.
4. As it was in the beginning, / is now and **ever shall** be, *
world without end. **Amen**.

*Repetition of the Introit Antiphon : **

Let us rejoice in the Lord, | for our Savior is born to the world. |
True peace has descended from | **heav-en**.

(*)
*Organ accomp.
for the repetition
of the Introit.*



OFFERTORY

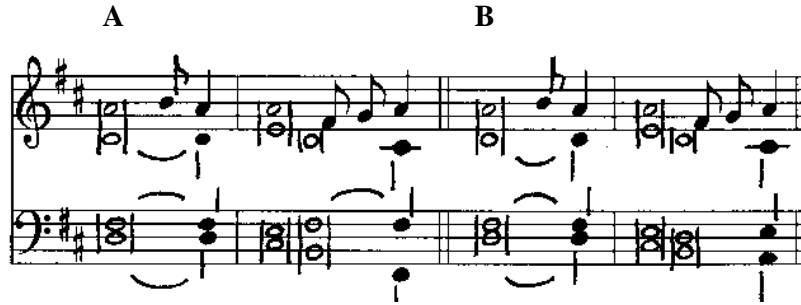
Let the heavens be glad and the *earth rejoice*
before the Lord / for **he comes**.

COMMUNION

The Word of God *became man* ; *
we have seen **his glory**.

Nativity of the Lord : Mass at Midnight

Modal Psalm Tone. Mode 5



INTROIT

1. The Lord said to me : / You are *my Son* ; *
this day have I begotten you.
 2. Why this tumult *among nations*, *
among peoples this useless murmuring ?
 3. Glory be to the Father, and to *the Son*, *
and to the Holy Spirit.
 4. As it was in the beginning, /
is now and ever **shall** be, *
world without end. Amen.
- B** 5. The Lord said to me : / You are *my Son* ; *
this day have I begotten you.

Or : INTROIT

1. Let us rejoice in the Lord, / for our Savior is born to *the world* *
True peace has descended from heaven.
 2. Justice shall flower in *his days*, *
and profound peace, / till the moon be no **more**. (R.)
 3. Glory be to the Father, and to *the Son*, *
and to the Holy Spirit.
 4. As it was in the beginning, / is now and ever **shall** be, *
world without end. Amen.
- B** 5. Let us rejoice in the Lord, / for our Savior is born to *the world* *
True peace has descended from heaven.

OFFERTORY

Let the heavens be glad and the earth *rejoice*
before the Lord / for he comes.

COMMUNION

The Word of God became *man* ; *
we have seen his glory.

NOTE

The modal psalm tone may be sung in unison with organ accompaniment, or SATB a cappella

POINTING :

1. One final accent : **bold type**
2. One or two preparatory syllables : *italic type*
3. Change of harmony in the middle of the recitation : underlined syllable
Change of harmony affects only the organ accompaniment or the ATB parts.
Change of harmony does not affect the melody line.

Nativity of the Lord : Mass at Midnight

INTROIT : Option 1

2. The Lord said to me : * You are my Son ; this day have I be- got- ten you.

Musical score for the Introit Option 1. It consists of two staves: a vocal line in the treble clef and an organ accompaniment in the bass clef. The key signature is one flat (F major), and the time signature is 4/4. The vocal line begins with a quarter rest followed by a series of eighth and quarter notes. The organ accompaniment provides a harmonic foundation with chords and moving lines.

Melody by Columba Kelly, O.S.B. Harmonization by Samuel F. Weber, O.S.B.

INTROIT : VERSE

2. Why this tu- mult a- mong na- tions, * a- mong peo- ples this use- less mur- mur- ing ?

Musical score for the Introit Verse. It consists of two staves: a vocal line in the treble clef and an organ accompaniment in the bass clef. The key signature is one flat (F major), and the time signature is 4/4. The vocal line starts with a quarter rest followed by eighth and quarter notes. The organ accompaniment features a steady harmonic accompaniment.

INTROIT : GLORIA PATRI

Glo- ry be to the Father, and to the Son, and to the Ho- ly Spir- it. * As it was in the

Musical score for the Introit Gloria Patri. It consists of two staves: a vocal line in the treble clef and an organ accompaniment in the bass clef. The key signature is one flat (F major), and the time signature is 4/4. The vocal line begins with a quarter rest followed by eighth and quarter notes. The organ accompaniment provides a rich harmonic texture.

beginning, is now, and ev- er shall be, world with- out end. A- men.

Musical score for the continuation of the Introit Gloria Patri. It consists of two staves: a vocal line in the treble clef and an organ accompaniment in the bass clef. The key signature is one flat (F major), and the time signature is 4/4. The vocal line continues with eighth and quarter notes. The organ accompaniment maintains the harmonic accompaniment.

Nativity of the Lord : Mass at Midnight

INTROIT : VERSE

2. Why this tu- mult a- mong na- tions, * a- mong peo- ples this use- less mur- mur- ing ?

Musical score for the Introit Verse. It consists of two staves: a vocal line in the upper staff and an organ accompaniment in the lower staff. The key signature is one flat (B-flat), and the time signature is 4/4. The vocal line begins with a treble clef and a '7' time signature. The organ accompaniment begins with a bass clef and a '7' time signature. The music is in a minor mode and features a steady, rhythmic accompaniment with some melodic movement in the vocal line.

INTROIT. VERSE : SATB

Serve the Lord with fear /
and trembling, pay him hom- age. Blessed are they who put their trust in God.

Musical score for the Introit Verse SATB. It consists of two staves: SATB voices in the upper staff and organ accompaniment in the lower staff. The key signature is one flat (B-flat), and the time signature is 4/4. The SATB voices begin with a treble clef. The organ accompaniment begins with a bass clef. The music is in a minor mode and features a steady, rhythmic accompaniment with some melodic movement in the SATB voices.

Based on a tone by Carlo Rossini

INTROIT. GLORIA PATRI : SATB

2. Glo- ry be to the Fa- ther, and to the Son, * and to the Ho- ly Spir- it.

Musical score for the Introit Gloria Patri. It consists of two staves: a vocal line in the upper staff and an organ accompaniment in the lower staff. The key signature is one flat (B-flat), and the time signature is 4/4. The vocal line begins with a treble clef and a '7' time signature. The organ accompaniment begins with a bass clef and a '7' time signature. The music is in a minor mode and features a steady, rhythmic accompaniment with some melodic movement in the vocal line.

As it was in the beginning, /
is now, and ev- er shall be, world with- out end. A- men.

Musical score for the Introit Gloria Patri SATB. It consists of two staves: SATB voices in the upper staff and organ accompaniment in the lower staff. The key signature is one flat (B-flat), and the time signature is 4/4. The SATB voices begin with a treble clef. The organ accompaniment begins with a bass clef. The music is in a minor mode and features a steady, rhythmic accompaniment with some melodic movement in the SATB voices.

Nativity of the Lord : Mass at Midnight

INTROIT : VERSE

2. Why this tu- mult a- mong na- tions, * a- mong peo- ples this use- less mur- mur- ing ?

Musical score for the Introit Verse. It consists of a vocal line (treble clef) and an organ accompaniment (bass clef). The key signature is G minor (two flats). The time signature is 7/8. The vocal line begins with a quarter rest followed by a series of eighth and sixteenth notes. The organ accompaniment features a steady eighth-note bass line with chords in the right hand.

INTROIT. VERSE : SSA or TTB

Serve the Lord with fear /
and trem- bling, pay him hom- age. Blessed are they who put their trust in God.

Musical score for the Introit Verse (SSA or TTB). It consists of a vocal line (treble clef) and an organ accompaniment (bass clef). The key signature is G minor (two flats). The time signature is 8/8. The vocal line begins with a quarter rest followed by a series of quarter and eighth notes. The organ accompaniment features a steady eighth-note bass line with chords in the right hand.

Based on a tone by Carlo Rossini

INTROIT. GLORIA PATRI : SSA or TTB

2. Glo- ry be to the Fa- ther, and to the Son, * and to the Ho- ly Spir- it.

Musical score for the Introit Gloria Patri. It consists of a vocal line (treble clef) and an organ accompaniment (bass clef). The key signature is G minor (two flats). The time signature is 7/8. The vocal line begins with a quarter rest followed by a series of eighth and sixteenth notes. The organ accompaniment features a steady eighth-note bass line with chords in the right hand.

As it was in the beginning, /
is now, and ev- er shall be, world with- out end. A- men.

Musical score for the Introit Gloria Patri (SSA or TTB). It consists of a vocal line (treble clef) and an organ accompaniment (bass clef). The key signature is G minor (two flats). The time signature is 7/8. The vocal line begins with a quarter rest followed by a series of quarter and eighth notes. The organ accompaniment features a steady eighth-note bass line with chords in the right hand.

Nativity of the Lord : Mass at Midnight

INTROIT : Option 2

6. Let us re-joice in the Lord, * for our Sa- vior is born to the world. True peace

has de-scend-ed from heav- en.

PSALM 71 SATB or unison with organ accompaniment

1. O Lord, with your judgment en- | *dow the King*,
and with your *justice the King's* son.
He shall govern your people with **justice**
and your af- | **flicted ones with judgment.** (Ṙ)
2. The mountains shall yield | *peace for the people*,
and *the hills justice.*
He shall defend the afflicted among the **people**,
save the | **children of the poor.** (Ṙ)

3. May he endure as | **long as the sun**, *
and like the moon through all *generations.*
Justice shall flower in his **days**, *
and profound peace, / till the | **moon be no more.** (Ṙ)
4. Glory be to the Father, and | *to the Son*, *
and to the *Holy Spirit.*
As it was in the beginning, / is now, and ever **shall be**, *
| **world without end. Amen.** (Ṙ)

Nativity of the Lord : Mass at Midnight

CHANT VERSES

Psalm 71

6. O Lord, with your jus-tice en-dow the king, and with your jus-tice en-dow the king's son, * he shall

gov-ern your peo-ple with jus-tice

GLORIA PATRI

6. Glo-ry be to the Fa-ther, and to the Son, and to the Ho-ly Spir-it. * As it was

in the be-gin-ning, is now and ev-er shall be, world with-out end. A-men.

Nativity of the Lord : Mass at Midnight

Responsorial Psalm : Option 1

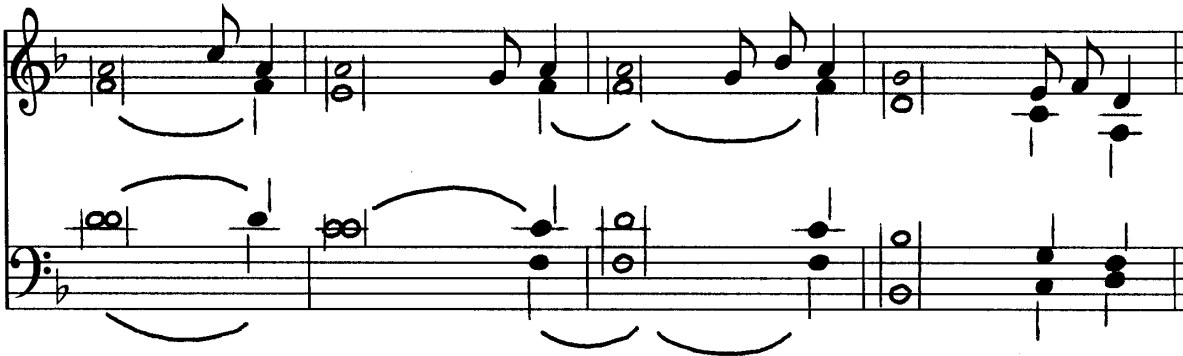
Hodie natus est nobis.

Luke 2 : 11

1. To- day is born our Sa- vior, Christ the Lord.



A B C D



Verses

Psalm 95 : 1-2. 2-3. 11-12. 13

- A 1. Sing to the Lord a *new song* ;
B sing to the Lord, all *you lands*.
D Sing to the Lord ; *bless his name*. (R)
- A 2. Announce his salvation, day after *day*.
B Tell his glory among *the nations* ;
D among all peoples, his *wondrous deeds*. (R)
- A 3. Let the heavens be glad and the earth *rejoice* ;
B let the sea and what fills it *resound* ;
C let the plains be joyful and all *that is in* them !
D Then shall all the trees of the *forest exult*. (R)
- A 4. They shall exult before the Lord, for *he comes* ;
B for he comes to rule *the earth*.
C He shall rule the *world with justice*
D and the peoples *with his constancy*. (R)

Nativity of the Lord : Mass at Midnight

Responsorial Psalm : Option 2

Hodie natus est nobis.

Luke 2 : 11

5. To- day is born our Sa- vior, Christ the Lord.

1. Sing to the Lord *a new song* ;
sing to the Lord, *all you lands* .
Sing to the Lord ; bless his **name** . (R)
2. Announce his salvation, *day after day* .
Tell his glory *among the nations* ;
among all peoples, his wondrous **deeds** . (R)

3. Let the heavens be glad and the *earth rejoice* ;
let the sea and what fills *it resound* ;
let the plains be joyful and all that is **in** them !
Then shall all the trees of the forest **exult** . (R)
4. They shall exult before the Lord, *for he comes* ;
for he comes to *rule the earth* .
He shall rule the world with **justice**
and the peoples *with his constancy* . (R)

Nativity of the Lord : Mass at Midnight

8. Al- le- lu- ia.

A

Musical notation for part A, featuring a treble and bass staff with a 4/4 time signature and a key signature of one flat. The melody is in the treble staff, and the bass line is in the bass staff. The lyrics "Al- le- lu- ia." are written above the treble staff.

8. Al- le- lu- ia, al- le- lu- ia, al- le- lu- ia.

B

Musical notation for part B, featuring a treble and bass staff with a 4/4 time signature and a key signature of one flat. The melody is in the treble staff, and the bass line is in the bass staff. The lyrics "Al- le- lu- ia, al- le- lu- ia, al- le- lu- ia." are written above the treble staff.

8. Al- le- lu- ia, al- le- lu- ia, al- le- lu- ia.

C

Musical notation for part C, featuring a treble and bass staff with a 4/4 time signature and a key signature of one flat. The melody is in the treble staff, and the bass line is in the bass staff. The lyrics "Al- le- lu- ia, al- le- lu- ia, al- le- lu- ia." are written above the treble staff.

VERSE

Musical notation for the verse, featuring a treble and bass staff with a 4/4 time signature and a key signature of one flat. The melody is in the treble staff, and the bass line is in the bass staff. The lyrics "I proclaim to you good news of great joy ; * today a Savior is born for us ; / Christ the Lord." are written above the treble staff.

Years ABC : Verse

Evangelizo vobis. Luke 2 : 1-14

I proclaim to you good news of great joy ; *
today a Savior is born for us ; / Christ the Lord.

Nativity of the Lord : Mass at Midnight

8. Al- le- lu- ia, al- le- lu- ia.

D

Organ accompaniment by Carlo Rossini

E

VIII.

VERSE

Years ABC : Verse

Evangelizo vobis. Luke 2 : 1-14

I proclaim to you good news of **great joy** ; *
today a Savior is born for us ; / *Christ the Lord.*

8. Al- le- lu- ia.

F

Years ABC : Verse

Evangelizo vobis. Luke 2 : 1-14

I proclaim to you good news of **great joy** ; *
today a Savior is born for us ; / *Christ the Lord.*

Nativity of the Lord : Mass at Midnight

OFFERTORY

5. Let the heav-ens be glad * and the earth re-joice ** be- fore the Lord for he comes.

VERSE 1

Sing to the Lord a new song ; sing to the Lord, all you lands. ** Be- fore.

VERSE 2

Sing to the Lord ; bless his Name ; announce his sal- va- tion day af- ter day. ** Be- fore.

Nativity of the Lord : Mass at Midnight

Communion

Verbum caro factum est.

John 1 : 14

7. The Word of God * be- came man ; we have seen his glo- ry.

PSALM VERSES. Psalm 95

(unison, with organ or SATB *a cappella*)

1. Give to the Lord, you families of nations, *
give to the Lord glory and **praise** ;
bring gifts and enter *his courts* ; *
worship the Lord in holy attire. (R)
2. Tremble before him, *all the earth* ; *
say among the nations : / The Lord is **king**.
He has made the world firm, / *not to be moved* ; *
He governs the peoples with equity. (R)
3. Let the heavens be glad and the *earth rejoice* ; *
let the plains be joyful and all that *is in* them !
Then shall all the trees of the forest exult before *the Lord*,
for he comes to rule the earth. (R)

Nativity of the Lord : Mass at Midnight

A NOTE ON THE PERFORMANCE OF THE INTROIT

The settings given here are arranged for Prince of Peace Church, where they are performed thus :

ENTRANCE PROCESSION

1. The bell rings. All stand.
2. Celebrant and ministers begin the procession.
3. The choir sings the Introit Antiphon, Psalm Verse, *Gloria Patri*, and repeats the Introit Antiphon *recto tono*.

INCENSATION OF THE ALTAR AND CRUCIFIX

4. The choir is concluding the Introit as the celebrant and ministers reach the altar. They reverence. The celebrant begins to fill the thurible with incense.
5. The organ intones the chorale melody for the metrical hymn, playing the whole melody through once.
6. Choir and congregation sing the metrical Psalm as the celebrant is incensing the altar and crucifix.
 - a. The whole Psalm may be sung in unison by all.
 - b. The choir may alternate with the congregation, singing the even number verses in unison, or in four part harmony, *a capella*. This is indicated in the program.
 - c. The organist may provide organ interludes. Festive instruments may be used on greater feasts. Varied hymn accompaniments are encouraged from verse to verse.

AT THE CHAIR

7. The celebrant concludes the incensation, and takes his place at the chair. The metrical Psalm concludes.
 - a. The singing of the metrical Psalm is timed so as to conclude with the arrival of the celebrant at the chair.
 - b. Some verses of the metrical Psalm may be omitted if they are not needed. The final verse, the Doxology, is always included and never omitted.
 - c. The Introit covers the action of the entrance of celebrant and ministers and the incensation of the altar. The singing should not be unduly prolonged at this point, although it may continue a bit if necessary.

PSALM VERSES

8. Psalm verses are provided for other communities if they choose not to use the metrical Psalm version. As indicated, the Introit Antiphon is repeated after the verses.

ADAPTATION

9. Prince of Peace is a large church in the romanesque style that allows for an extended entrance rite. Smaller churches and communities will adapt this plan to suit their particular needs.