

RESPONSORIAL PSALM

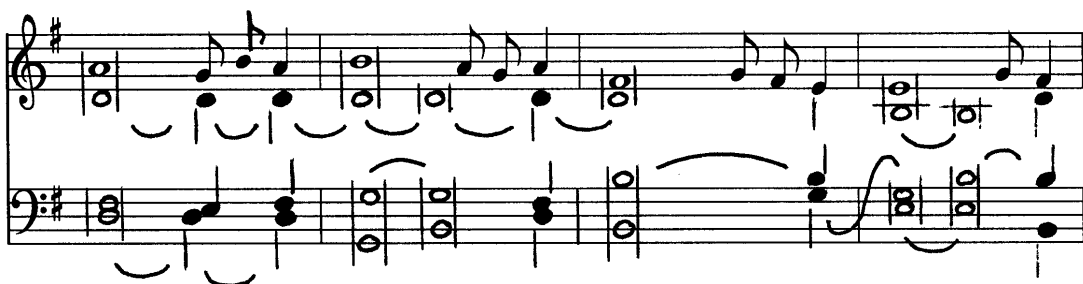
Monastic Profession

PSALM 26

4g. I long to see your face, O Lord.



Psalm tone melody by Columba Kelly, O.S.B.



Organist : change intervening chord on underlined syllable.

1. The Lord is my light and my *salvation* ;
whom *should I fear* ?
The Lord is the refuge *of my life* ;
of whom should I be *afraid* ? (R)
2. One thing I ask of the Lord ; / this *I seek* :
to dwell in the house of the Lord all the days *of my life* .
That I may gaze on the loveliness *of the Lord*
and contemplate *his temple* . (R)
3. For he will hide me in his *abode*
in the day *of trouble* ;
he will conceal me in the shelter *of his tent* ,
he will set me high upon a *rock* . (R)
4. You my glance seeks ; / your presence, O Lord , *I seek* .
Hide not your face *from me* ;
do not in anger *repel your servant* .
You are my helper : / cast *me not off* . (R)
5. Show me, O Lord , *your way*
and lead me on a level *path* .
because *of my foes* .
Forsake me not, O God *my Savior* . (R)